

# How State Parks' Plans

---

## Classification and Management Planning (CAMP)

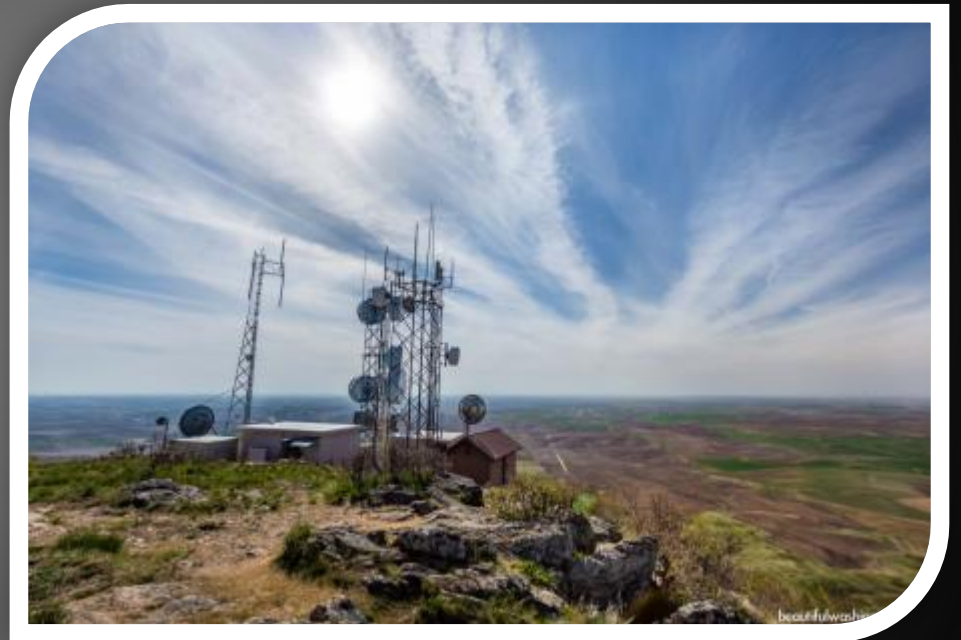
# Why plan?

- Provides a current assessment of park assets and future needs
- Provides direction for land use, trails, interpretation, and natural and cultural resource protection
- Strengthen existing community partnerships and identify new partnerships
- Also doing plans for Palouse Falls, Lyons Ferry, Lewis and Clark Trail and Fields Spring
- Have done plans for nearly 100 state parks



# CAMP End Products

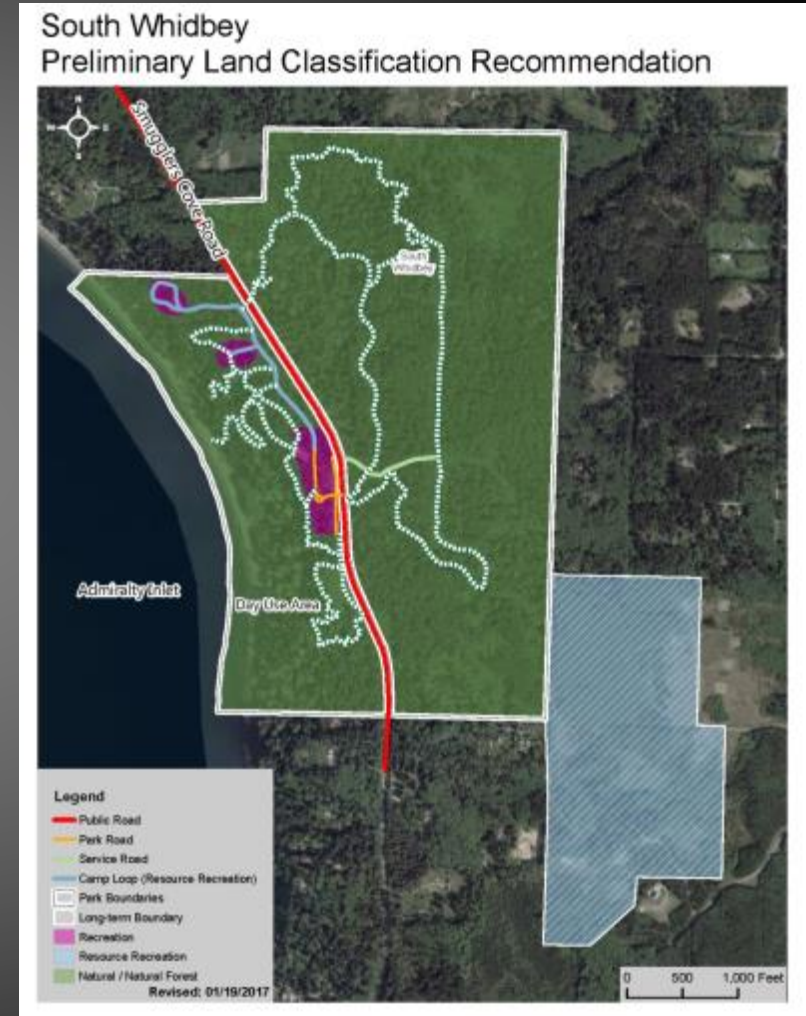
- Land classification
- Long-term park boundary
- Park management plan



Steptoe Butte State Park

# Land Classification

- Similar to county or city zoning
- Internal to the park and sets use and development intensities
- State park classifications
  - Recreation
  - Resource Recreation
  - Heritage
  - Natural





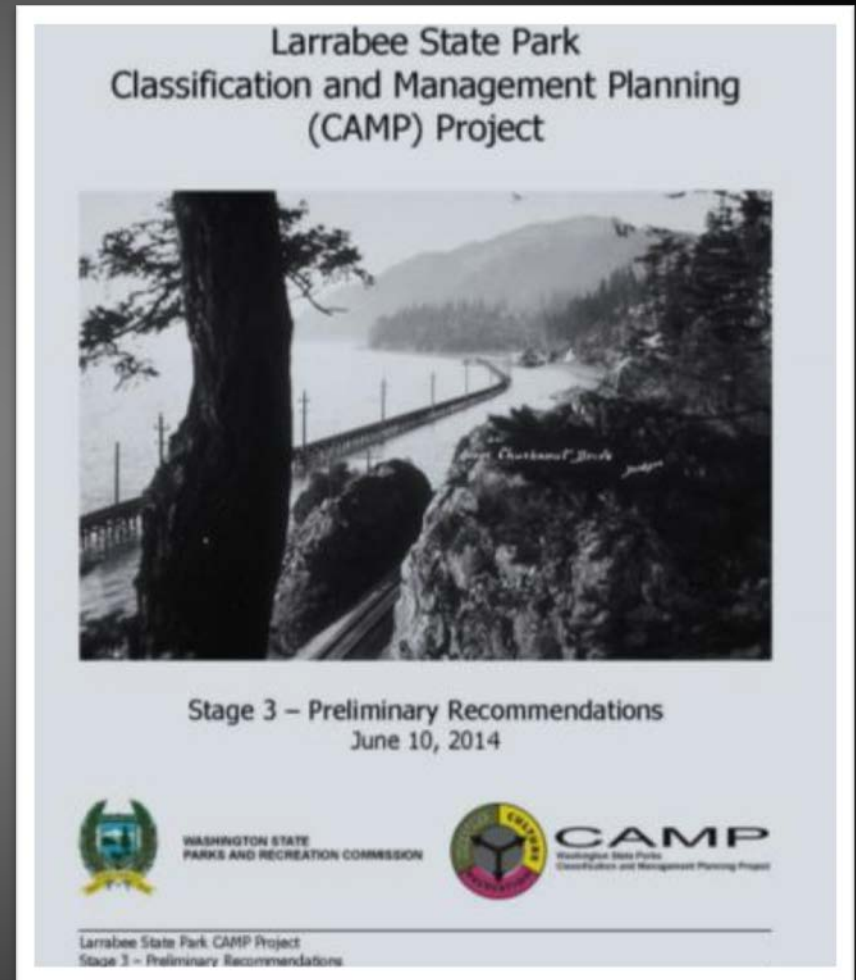
# Long-Term Park Boundary

- Properties that further agency's recreation and conservation mission
- Identifies agency-owned properties not essential to park mission



# Park Management Plan

- Responds to issues and concerns expressed by you and agency staff
- How the agency intends to manage the park's natural, cultural and recreational resources



# CAMPs Four Stages

---

Stage 1. Identification of park issues



Stage 2. Development of alternatives to address issues

Stage 3. Preliminary staff recommendations

Stage 4. Final recommendations to the Commission

# Stage 1 - Issue Identification

What is an issue?

- Anything you think is important for us to consider in our plans
- Anything agency staff think is important and want to communicate to you



South Whidbey State Park Public Meeting



# Stage 2 – Develop Alternatives

Exploration of different approaches to address issues such as . .

- Native plants and noxious weeds
- Historical and cultural features
- Recreational use
- Existing and future facility needs
- These alternatives are presented in the second public workshop



The road to Steptoe Butte

# Stage 3 – Preliminary Recommendations

---

Combination of the approaches explored in Stage 2 applied to . . .

- Land classification
- Long-term park boundaries
- Park management plan
- The preliminary recommendations are presented in the third public workshop

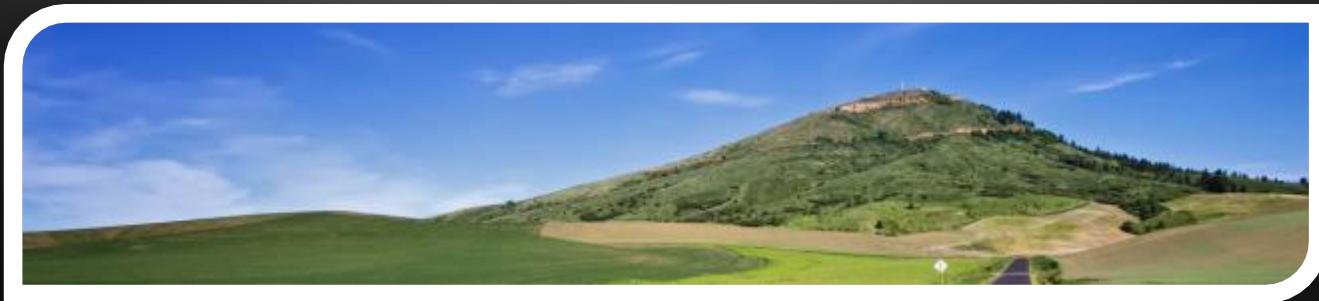


# Stage 4 – Final Recommendations

---

Final recommendations . . .

- Land classification
- Long-term park boundaries
- Park management plan
- The final recommendations are presented at a regularly scheduled meeting of the Parks and Recreation Commission



# Now It's Your Turn

---

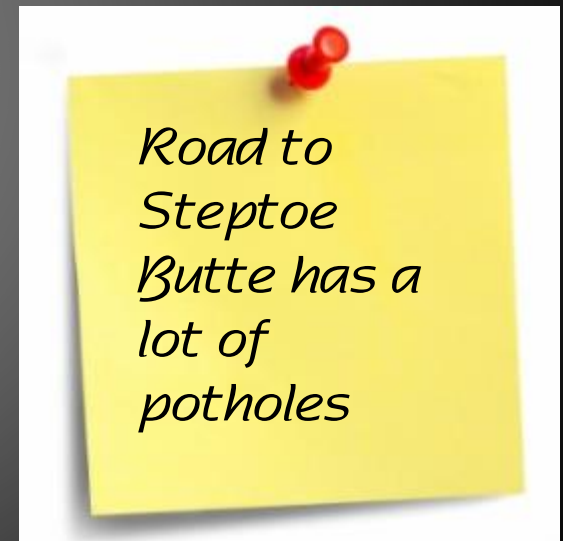
- Are there new facilities you'd like to see?
- Are there natural resources we need to better protect?
- What are you doing for recreation at the site?
- Would you like to volunteer or be part of a Friends groups?
- Are their neighboring properties with shared conservation or recreation objectives?



# Let Us know

---

- Stations set up for each park
- Write down your issues, concerns and questions
  - Sticky note
  - Comment box
  - Tell a staff person and we'll write it down
- One comment per sticky note please
- Reconvene



# Next Steps

---

- Post meeting materials and comments on website
- Develop alternatives to address issues identified tonight and through submitted comments
- Review alternatives in our next public workshop
- Other CAMP planning happening in the area
  - Palouse Falls State Park
  - Lyons Ferry State Park
  - Lewis and Clark Trail State Park

# Adjourn

---

- Email additional comments to Randy Kline, Project Coordinator, at [randy.kline@parks.wa.gov](mailto:randy.kline@parks.wa.gov)
- Visit the project website at <http://bit.ly/SteptoePlan> or search on "Steptoe Butte planning"