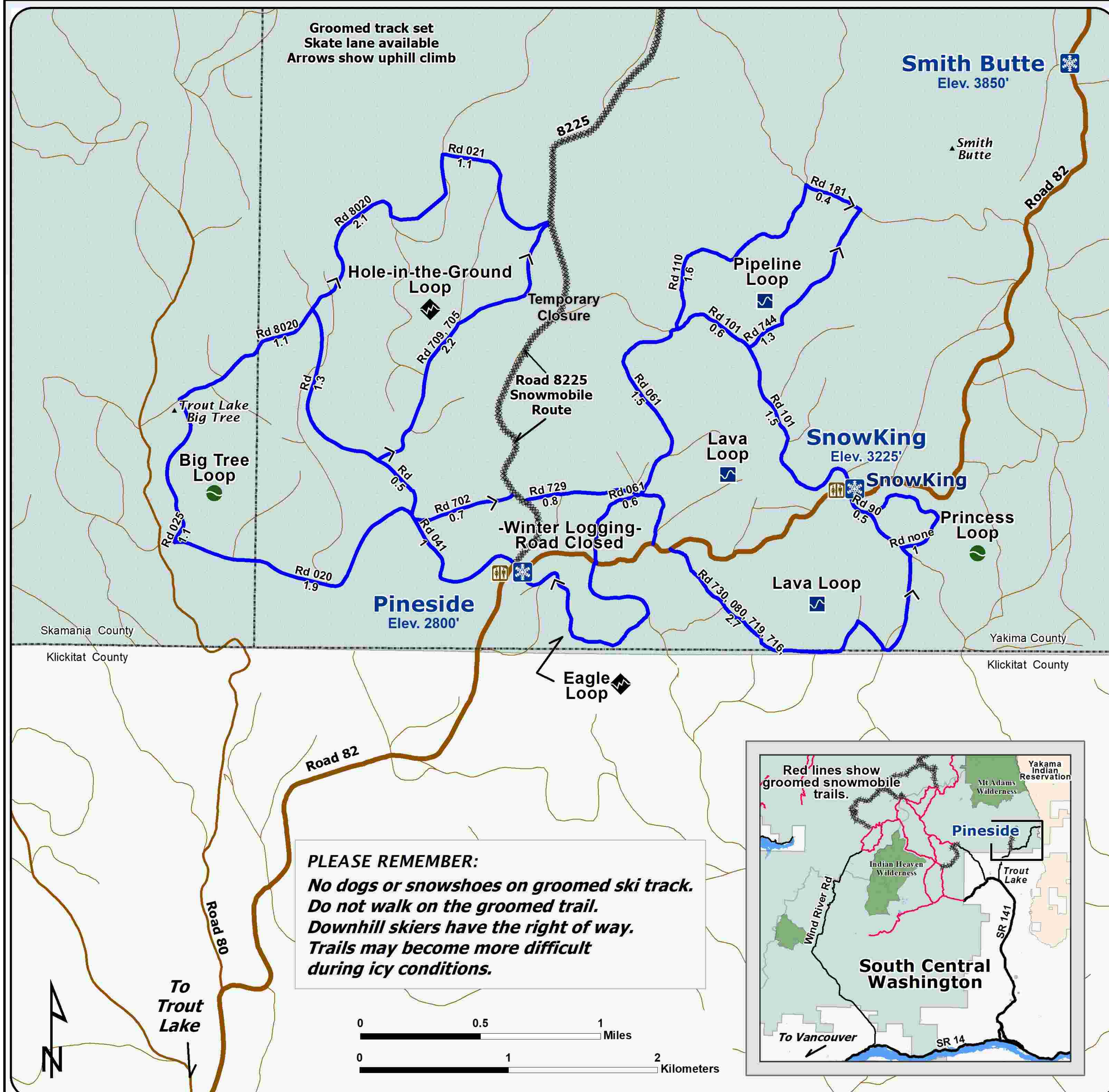


# Welcome Pineside Sno-Park Groomed Trail System



## Explanation

- Sno-Park
- Joint Use Sno-Park
- Temporary Closure
- Groomed Ski Trail
- Access Road
- Major Forest Road
- Road
- Gifford Pinchot National Forest

- Easiest
- More Difficult
- Most Difficult

**Eastside Trail System  
has 17 miles (28km) of  
groomed cross country  
ski trails.**

**Road Number  
Kilometers**

*Snow grooming equipment may  
be on the trail at any time.*

*Trail grooming schedules may change  
without notice due to snow conditions,  
temperatures, equipment breakdowns, etc.*

*Be aware of potential avalanche danger,  
check [www.nwac.us](http://www.nwac.us) before you leave home.*

*Trail grooming schedules and maps at  
[www.parks.wa.gov/winter](http://www.parks.wa.gov/winter)  
Please report errors or comments to:  
[winter@parks.wa.gov](mailto:winter@parks.wa.gov)*

**For Emergency Call 911  
Yakima Co. Sheriff 509-574-2500  
Skamania Co. Sheriff 509-427-9490**

**PLEASE REMEMBER:**  
**No dogs or snowshoes on groomed ski track.**  
**Do not walk on the groomed trail.**  
**Downhill skiers have the right of way.**  
**Trails may become more difficult  
during icy conditions.**

