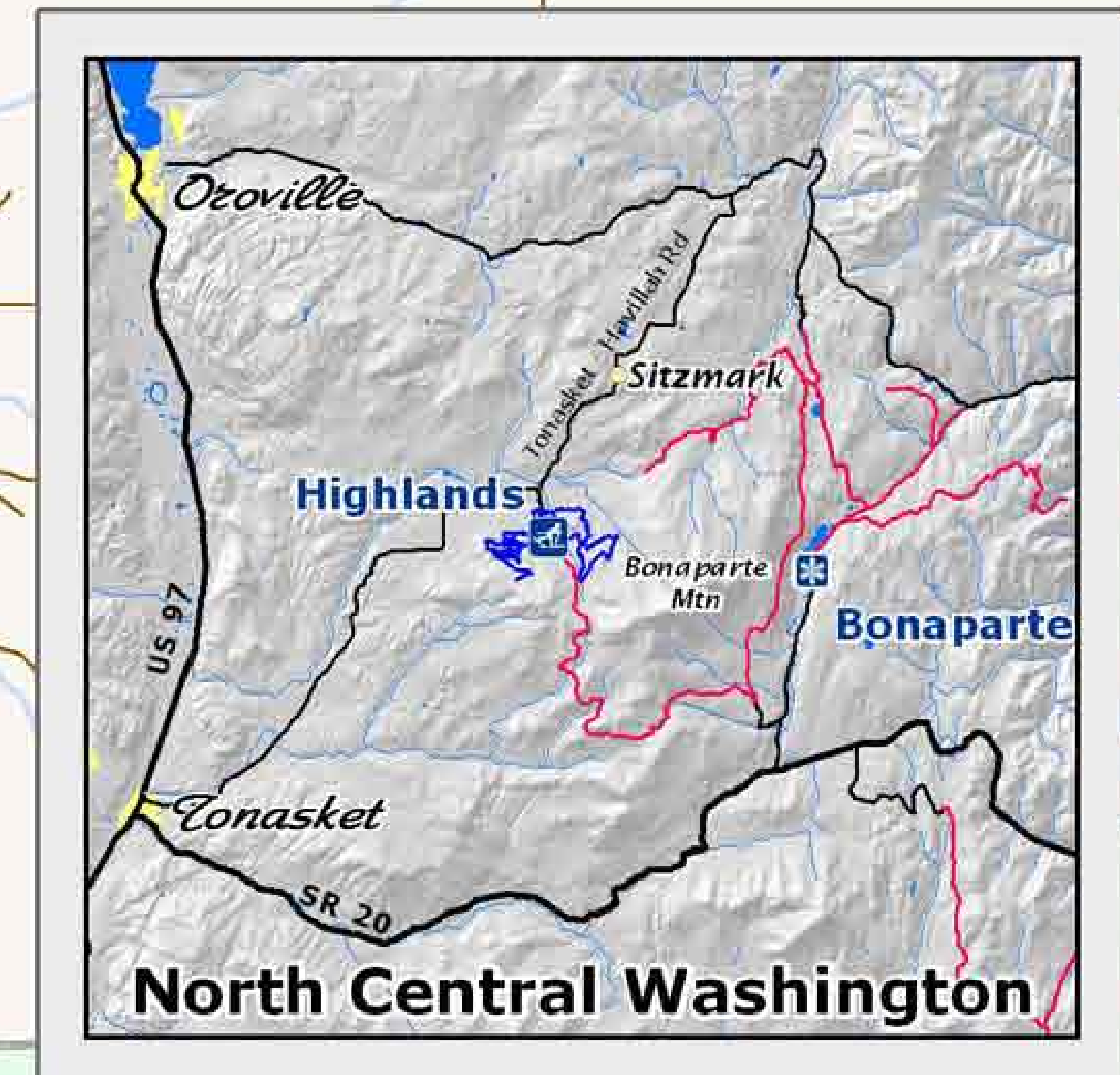


# Welcome Highlands Sno-Park Groomed Trail System



## Explanation

- Non-Motorized Sno-Park
- Groomed Ski Trail
- Marked Ski Route
- Groomed Snowmobile Trail
- Trail Junction
- View
- Elevation in Feet
- Sno-Park Access Road
- Road
- Okanogan National Forest
- Private Parcels within USFS Administrative Boundary

Area has 30 kilometers (18 mi.) of groomed cross country ski trails. Trail name and distance labeled between intersections.



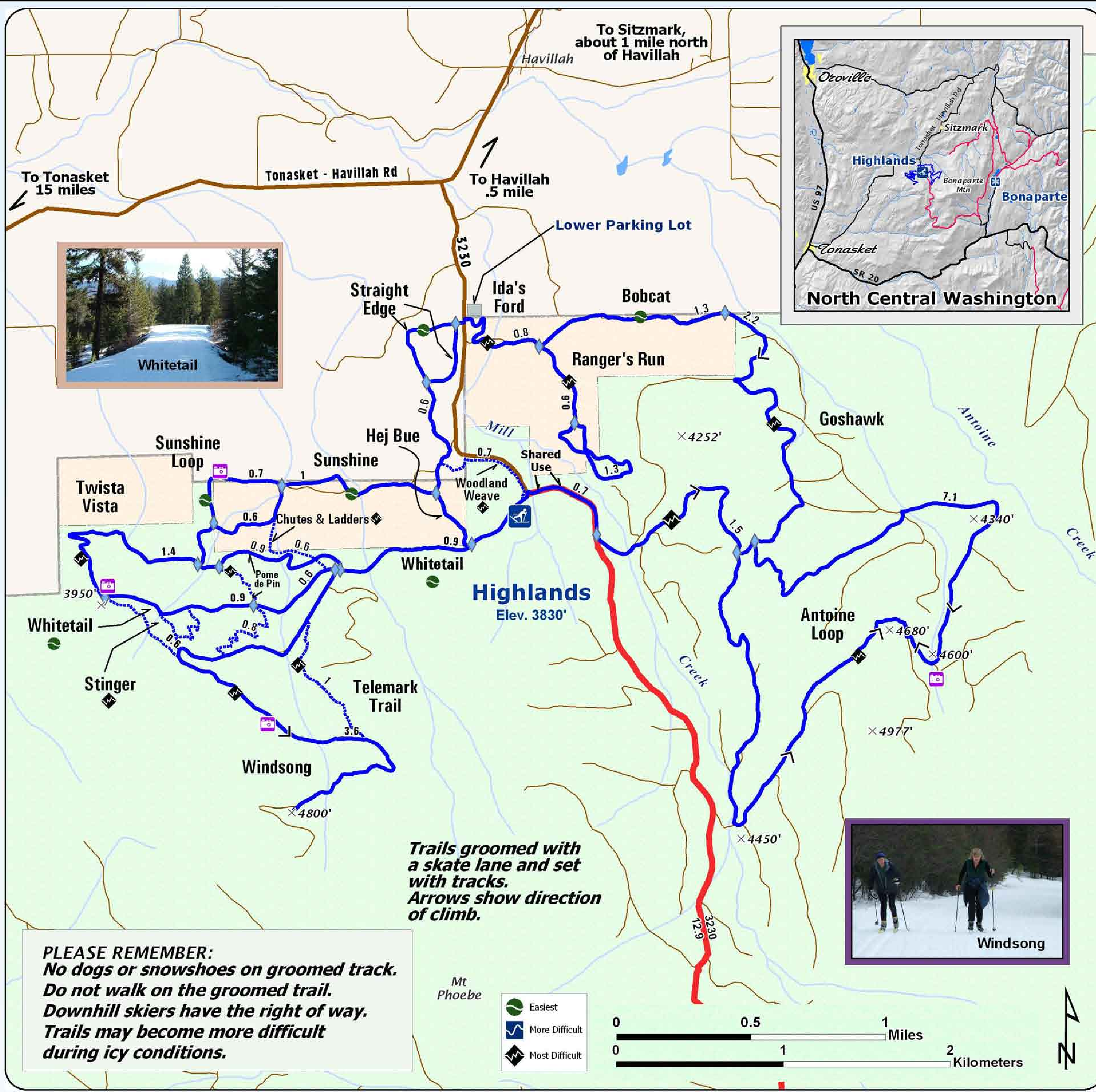
*Snow grooming equipment may be on the trail at any time.*

*Trail grooming schedules may change without notice due to snow conditions, temperatures, equipment breakdowns, etc.*

*Be aware of potential avalanche danger, check [www.nwac.us](http://www.nwac.us) before you leave home.*

*Trail grooming schedules and maps at [www.parks.wa.gov/winter](http://www.parks.wa.gov/winter)  
Please report errors or comments to: [winter@parks.wa.gov](mailto:winter@parks.wa.gov)*

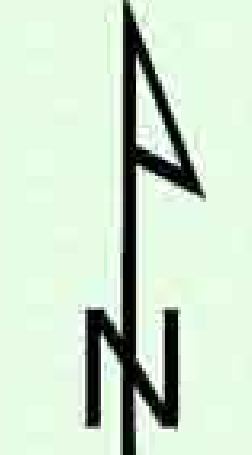
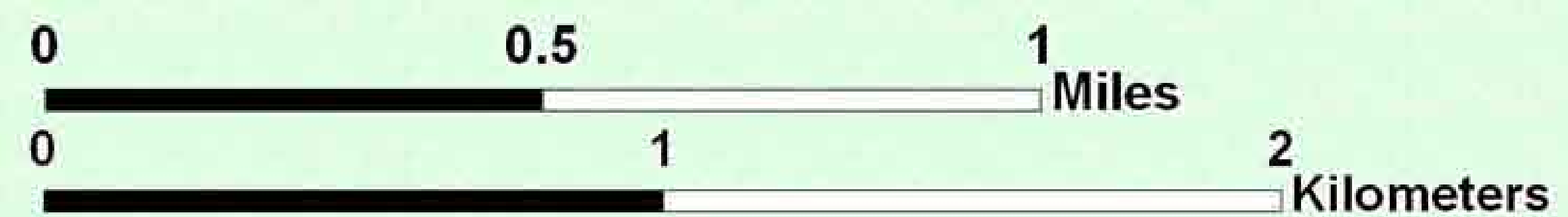
**For Emergency Call 911  
Okanogan Co. Sheriff 509-422-7232**



**Trails groomed with a skate lane and set with tracks. Arrows show direction of climb.**

**PLEASE REMEMBER:**  
**No dogs or snowshoes on groomed track.**  
**Do not walk on the groomed trail.**  
**Downhill skiers have the right of way.**  
**Trails may become more difficult during icy conditions.**

- Easiest
- More Difficult
- Most Difficult



Mt Phoebe

To Tonasket 15 miles

Tonasket - Havillah Rd

To Havillah .5 mile

To Sitzmark, about 1 mile north of Havillah

Lower Parking Lot

Straight Edge

Ida's Ford

Bobcat

Ranger's Run

Goshawk

Sunshine Loop

Sunshine

Hej Bue

Shared Use

**Highlands**  
Elev. 3830'

Antoine Loop

Twista Vista

Whitetail

Windsong

Telemark Trail

Stinger

Mt Phoebe