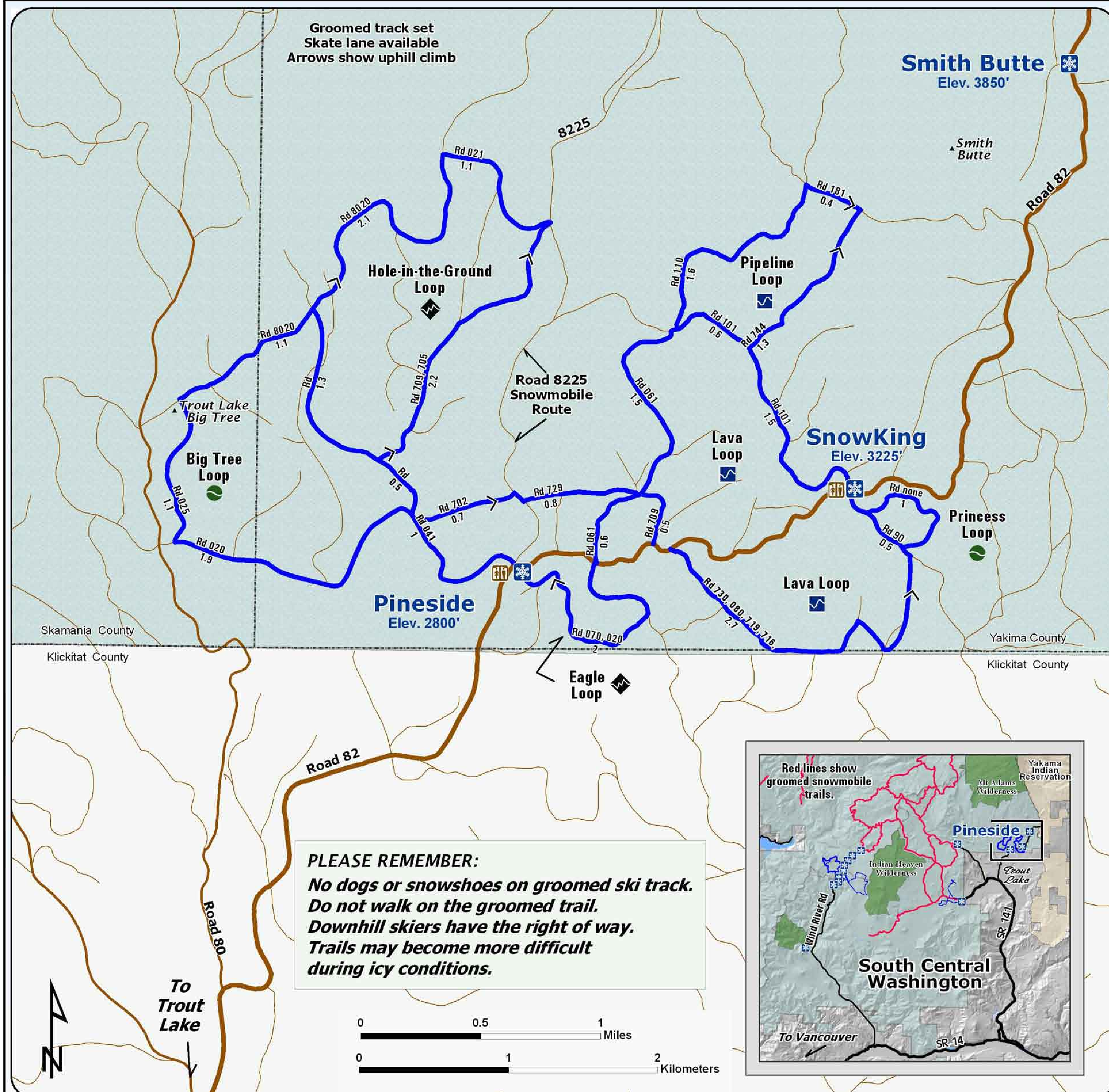


Welcome SnowKing Sno-Park Groomed Trail System



Groomed track set
Skate lane available
Arrows show uphill climb

Explanation

- Joint Use Sno-Park
- Groomed Ski Trail
- Access Road
- Major Forest Road
- Road
- Gifford Pinchot National Forest

- Easiest
- More Difficult
- Most Difficult

Eastside Trail System
has 28 kilometers (17 miles) of
groomed cross country ski trails.

Road Number
Kilometers

Snow grooming equipment may be on the trail at any time.

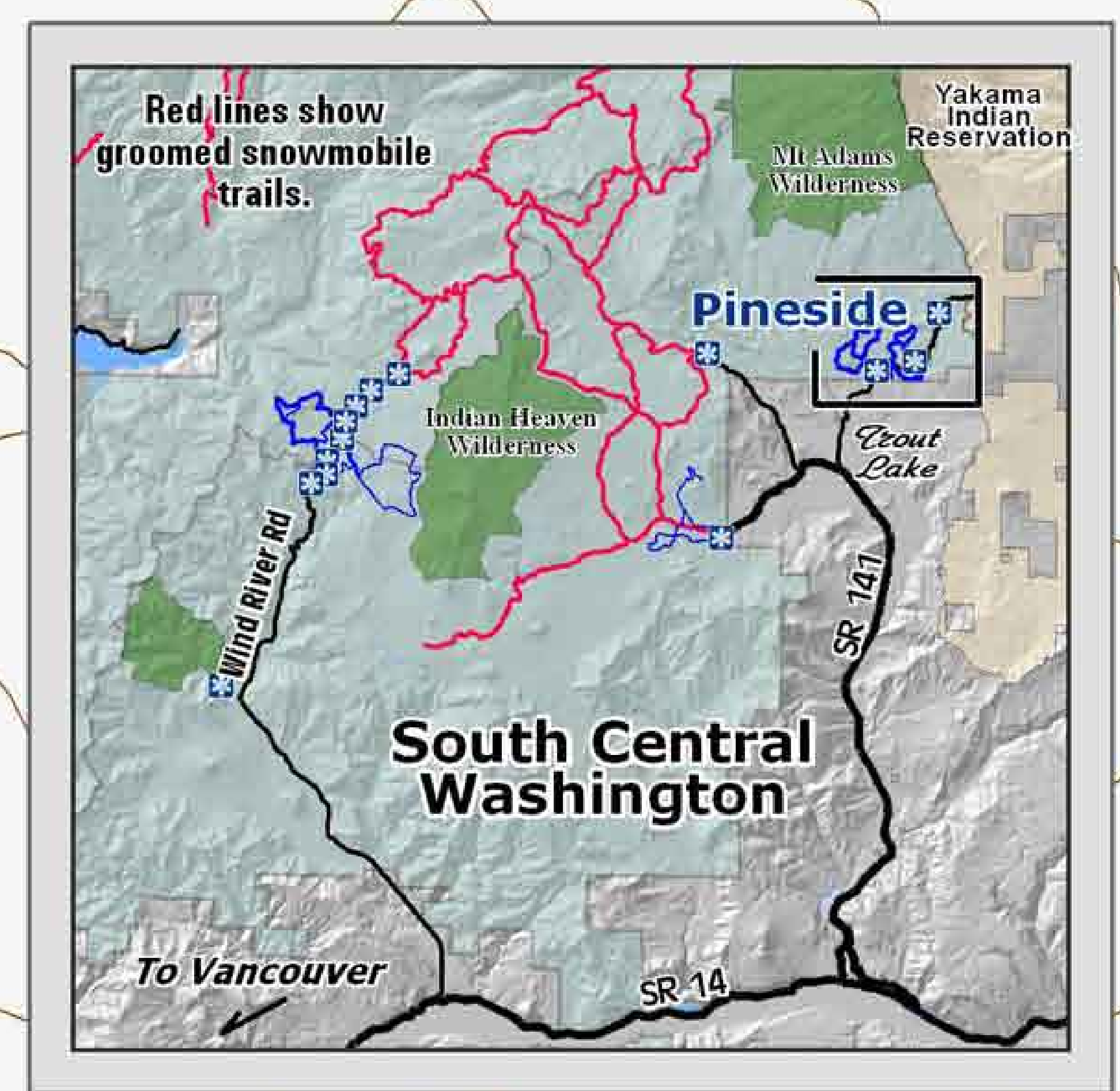
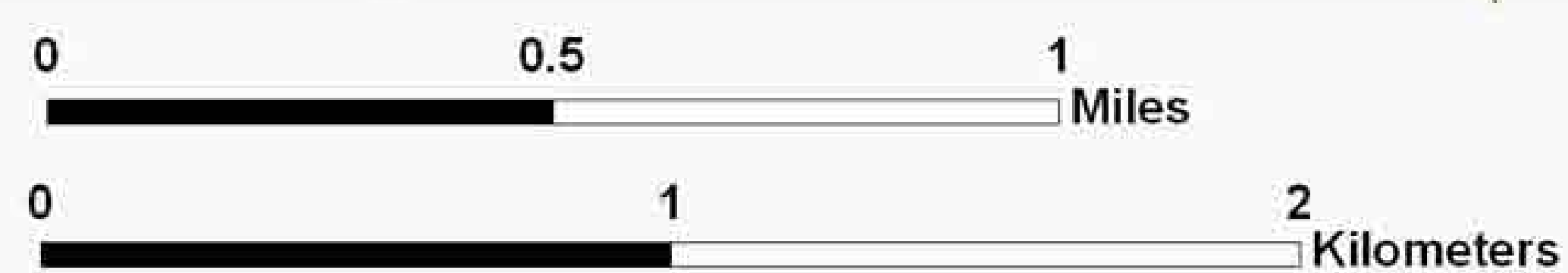
Trail grooming schedules may change without notice due to snow conditions, temperatures, equipment breakdowns, etc.

Be aware of potential avalanche danger, check www.nwac.us before you leave home.

*Trail grooming schedules and maps at www.parks.wa.gov/winter
Please report errors or comments to: winter@parks.wa.gov*

For Emergency Call 911
Yakima Co. Sheriff 509-574-2500
Skamania Co. Sheriff 509-427-9490

PLEASE REMEMBER:
No dogs or snowshoes on groomed ski track.
Do not walk on the groomed trail.
Downhill skiers have the right of way.
Trails may become more difficult during icy conditions.



To Trout Lake