

# The Vision

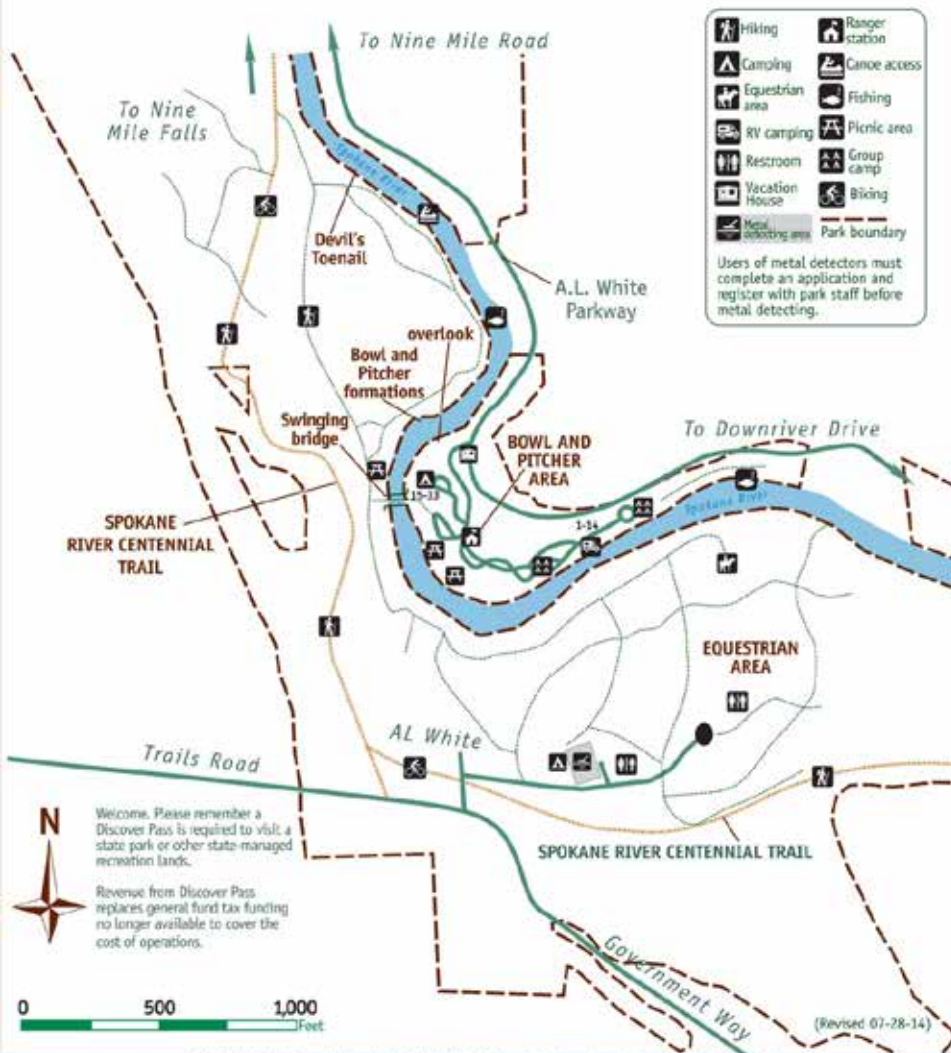
## Riverside's Future

- Long-term boundary
- Land classifications
- Management Vision
- Next steps

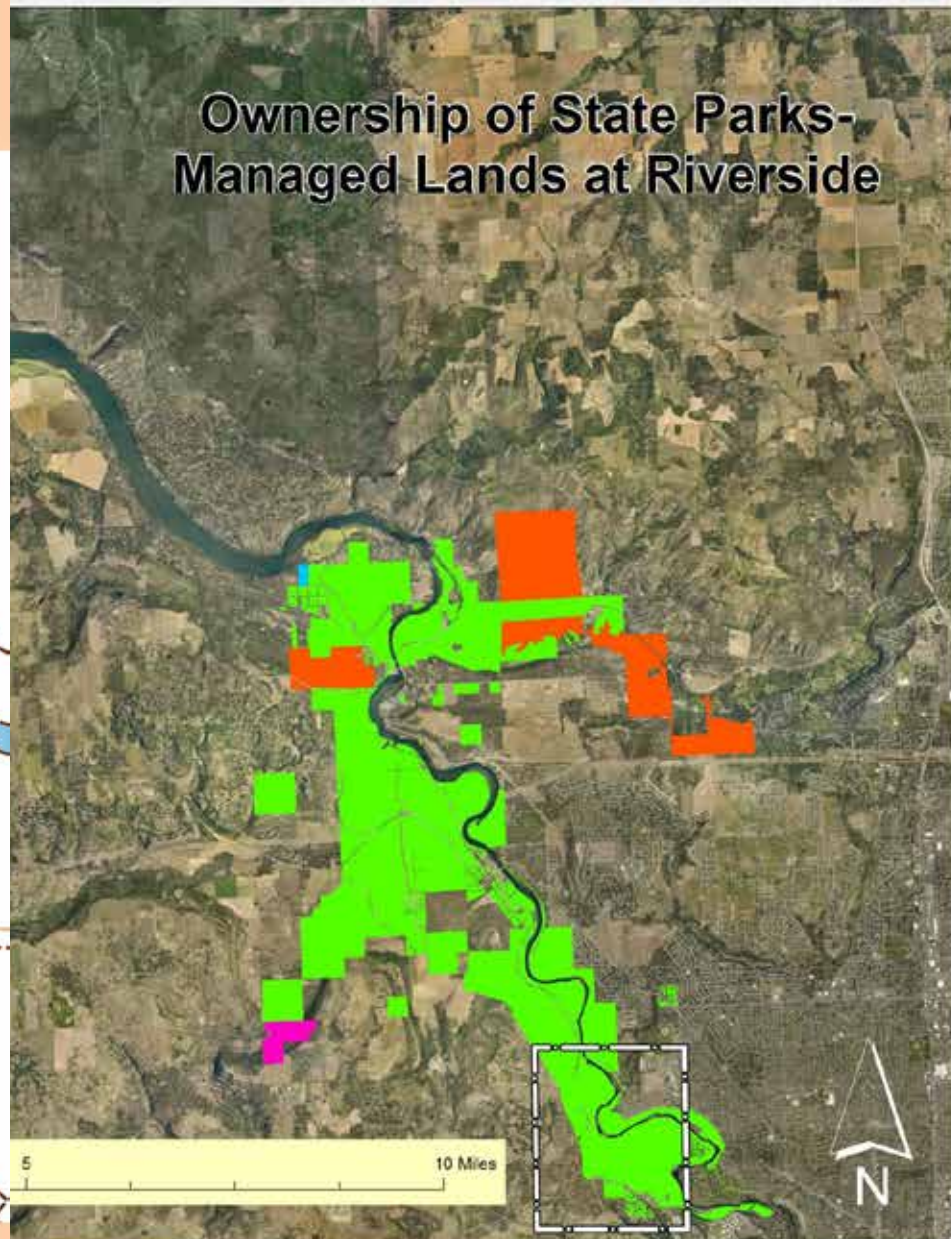
# Riverside is a Misunderstood Place



## Riverside State Park



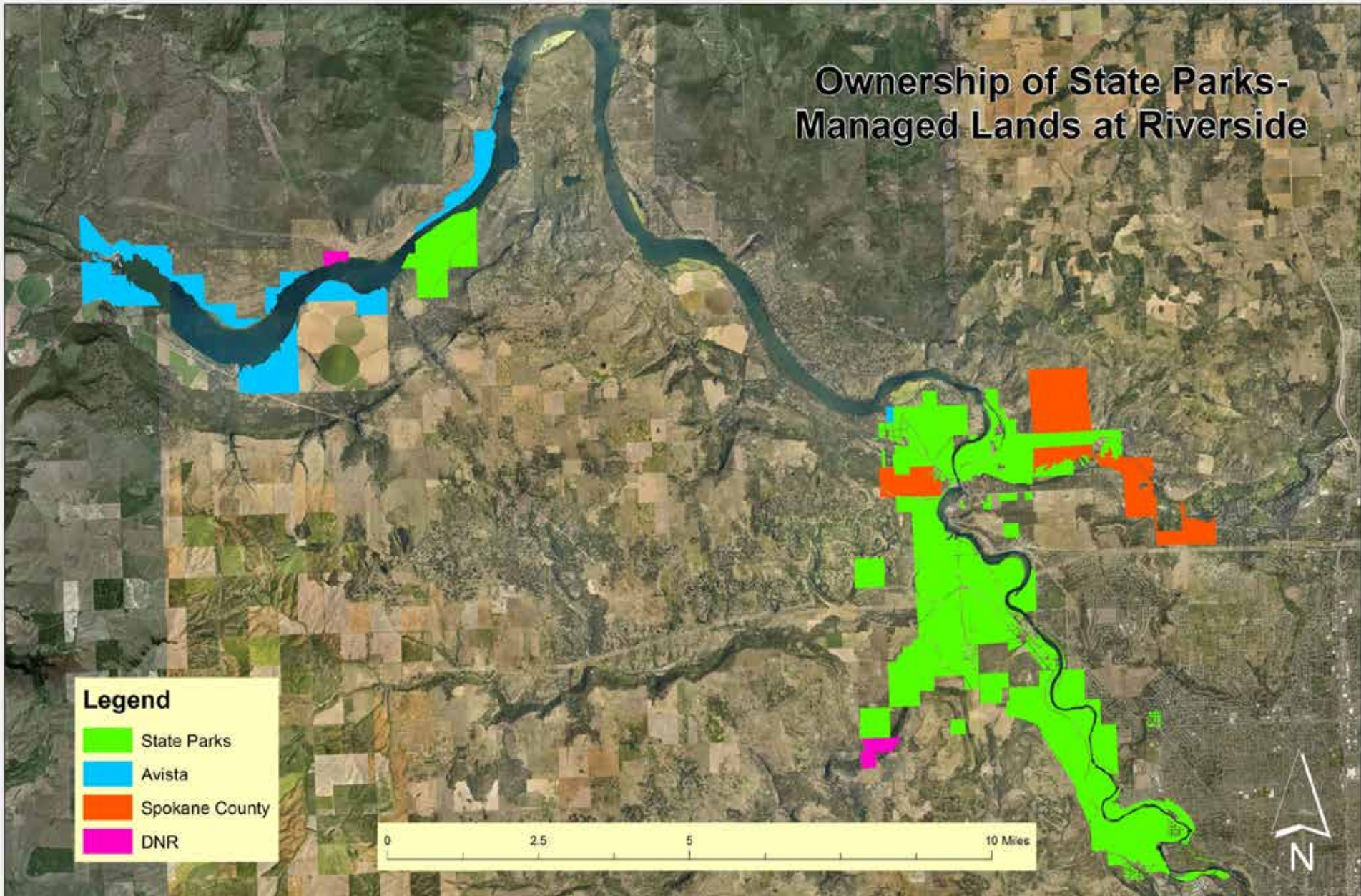
## Ownership of State Parks-Managed Lands at Riverside





# 12,167 acre park

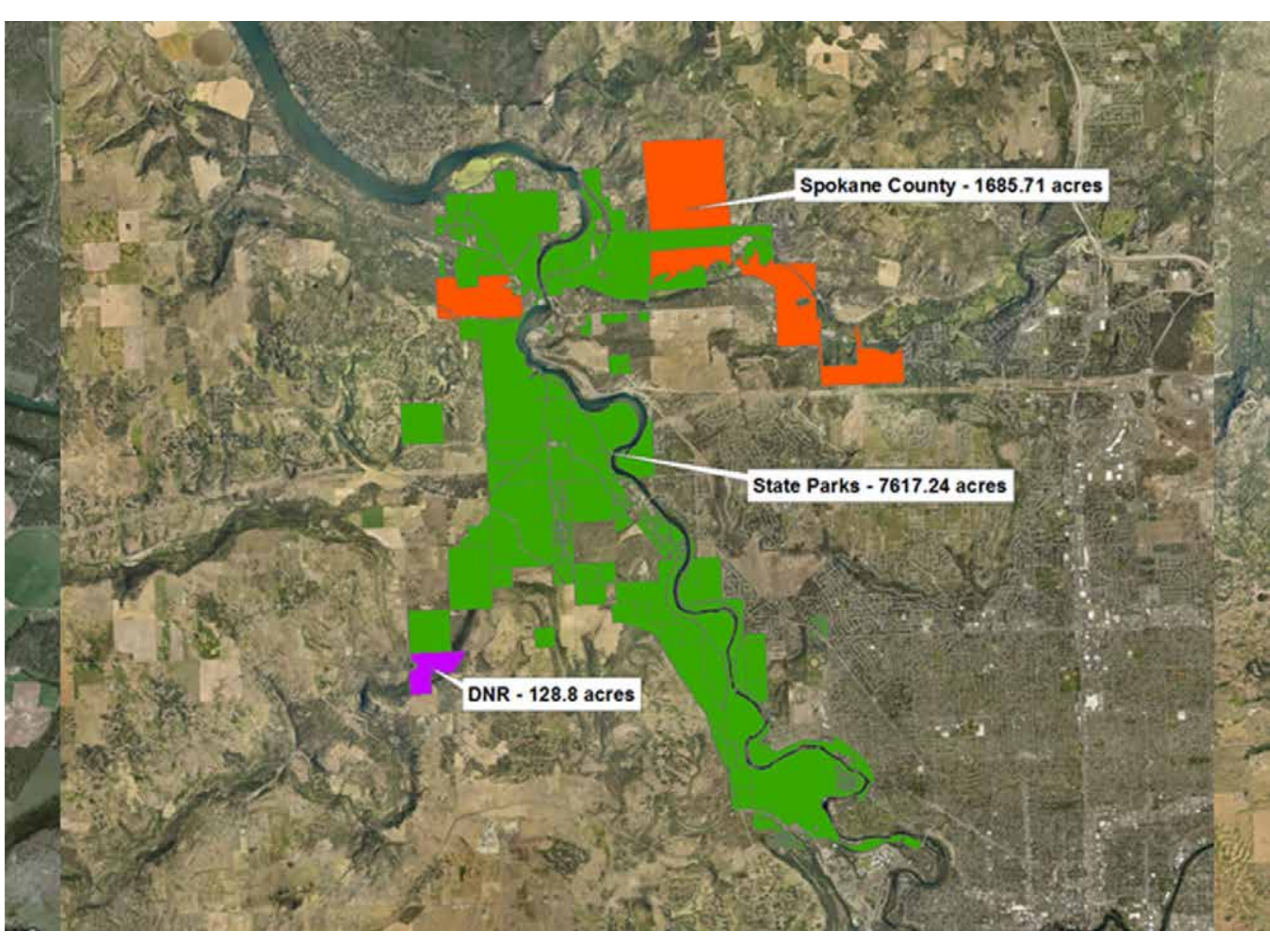
Ownership of State Parks-  
Managed Lands at Riverside



# Lands managed within long-term boundary

- State Parks manages **9,432 acres** *within* long-term boundary
- **7,617 acres** owned by State Parks
- **1,686 acres** owned by Spokane County
- **129 acres** owned by DNR





**Spokane County - 1685.71 acres**

**State Parks - 7617.24 acres**

**DNR - 128.8 acres**

# Lands managed outside long-term boundary

- State Parks manages **2,735 acres** *outside* long-term boundary
- **1,963 acres** owned by Avista Corporation
- **680 acres** owned State Parks (Fisk)
- **92 acres** owned by Department of Natural Resources



**1963.22 acres - Avista (blue)**  
**680.28 acres - State Parks (green)**  
**91.56 acres - DNR (purple)**



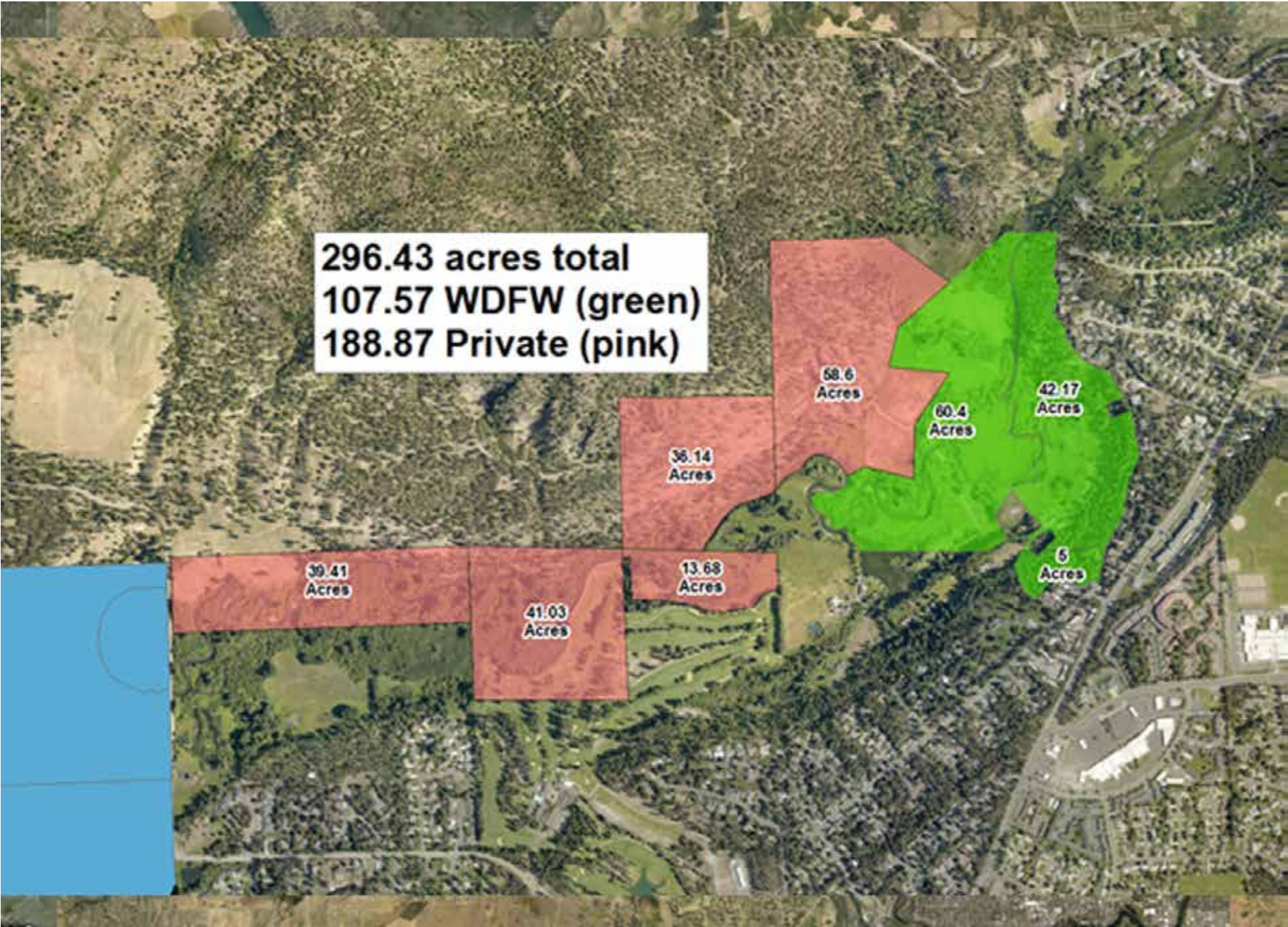
# Expansion of Long-term Boundary

*Potential to expand by 2,088 acres*

- 621-acres *Lake Spokane* (adjacent to Knights Lake—DNR)
- 680-acres Fisk property (State Parks lands)
- 92-acres Lake Spokane Campground (DNR)
- 400-acres *Lake Spokane* (McLellan Con. Area—Spokane Co)
- 297-acres *Little Spokane* (Fish & Wildlife and private landowners)
- 2-acres *Sontag Park* (Disposal to Nine Miles Falls School District)



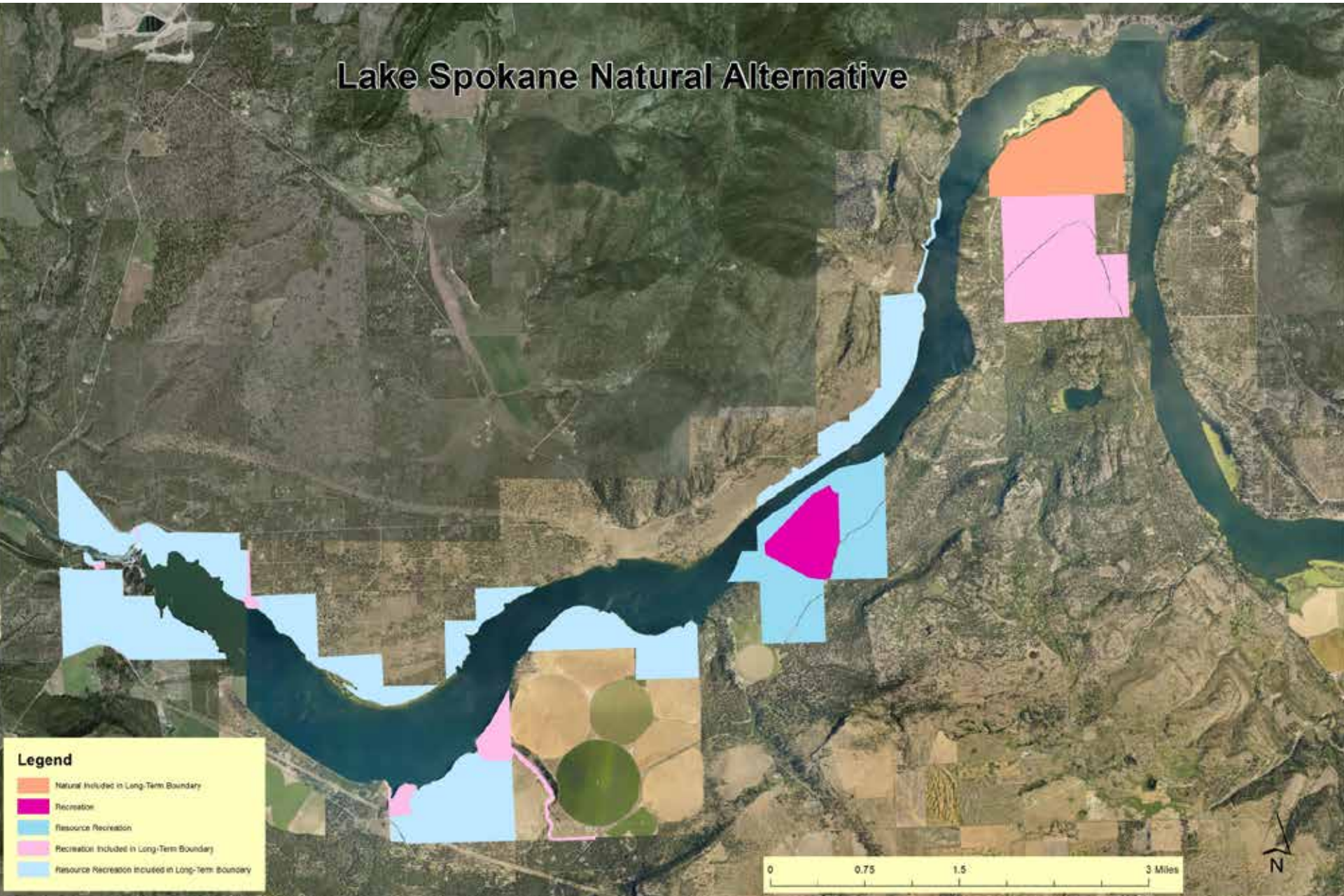
# Expansion: Little Spokane River



Could be a 13,218 acre park

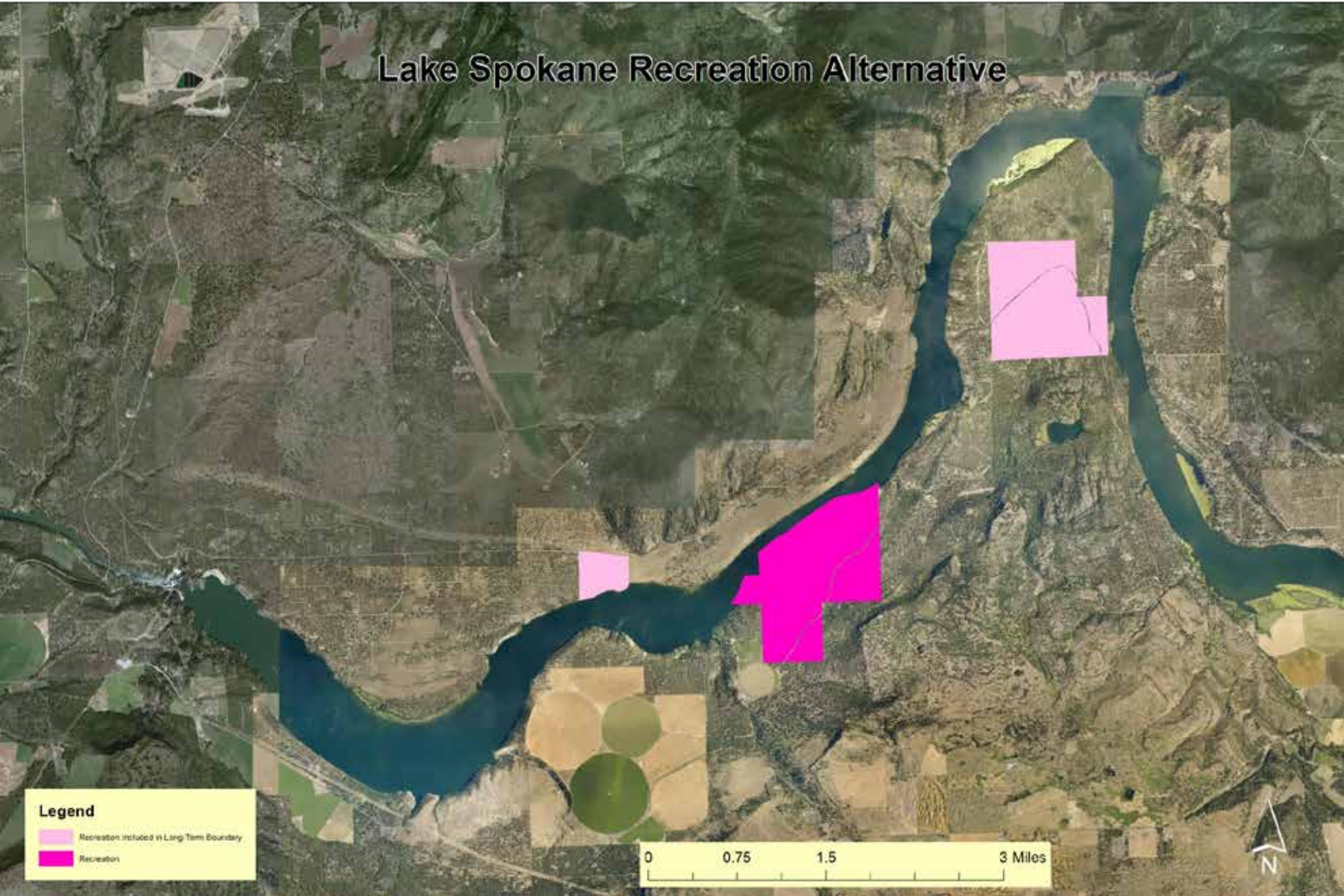


# Expansion/Land Class Lake Spokane—Nat



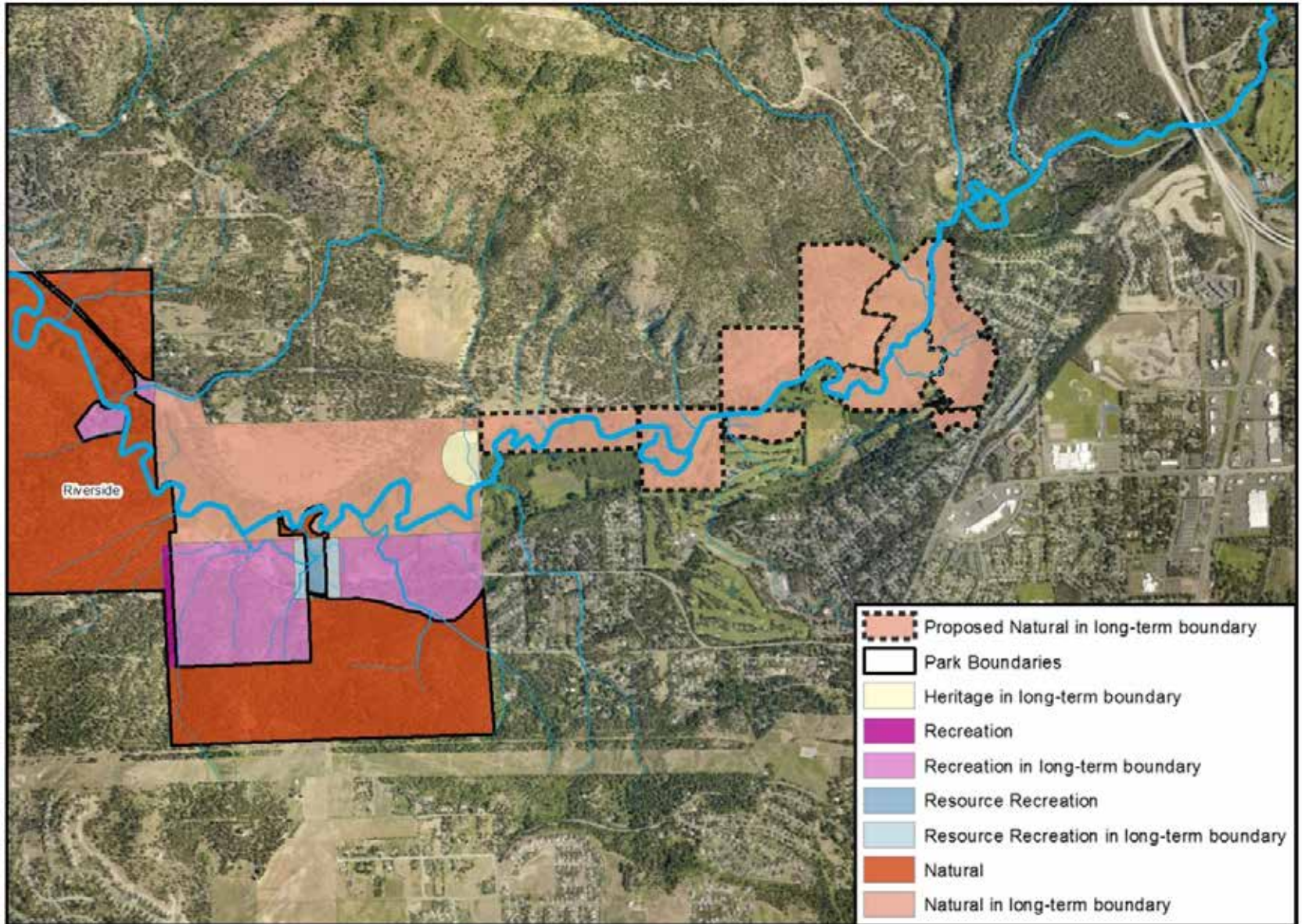


# Expansion/Land Class Lake Spokane-Rec





# Land Classification for Little Spokane River-Natural



**Riverside State Park - Natural Alternative**