




Riverside Camping

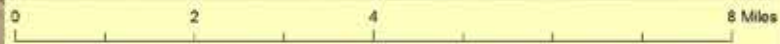
Existing Conditions

- Bowl and Pitcher: 16 standard sites; 16 utility hookup sites; group camp (40-60 people)
- Equestrian campground: 10 equestrian campsites with corrals
- Nine Mile Recreation Area: 3 tent sites; 21 RV sites
- Lake Spokane campground: 11 primitive campsites
- Lake Spokane boat-in sites (4 locations)

Riverside State Park

Legend

-  park office
-  Park Boundaries
-  camping




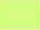

12

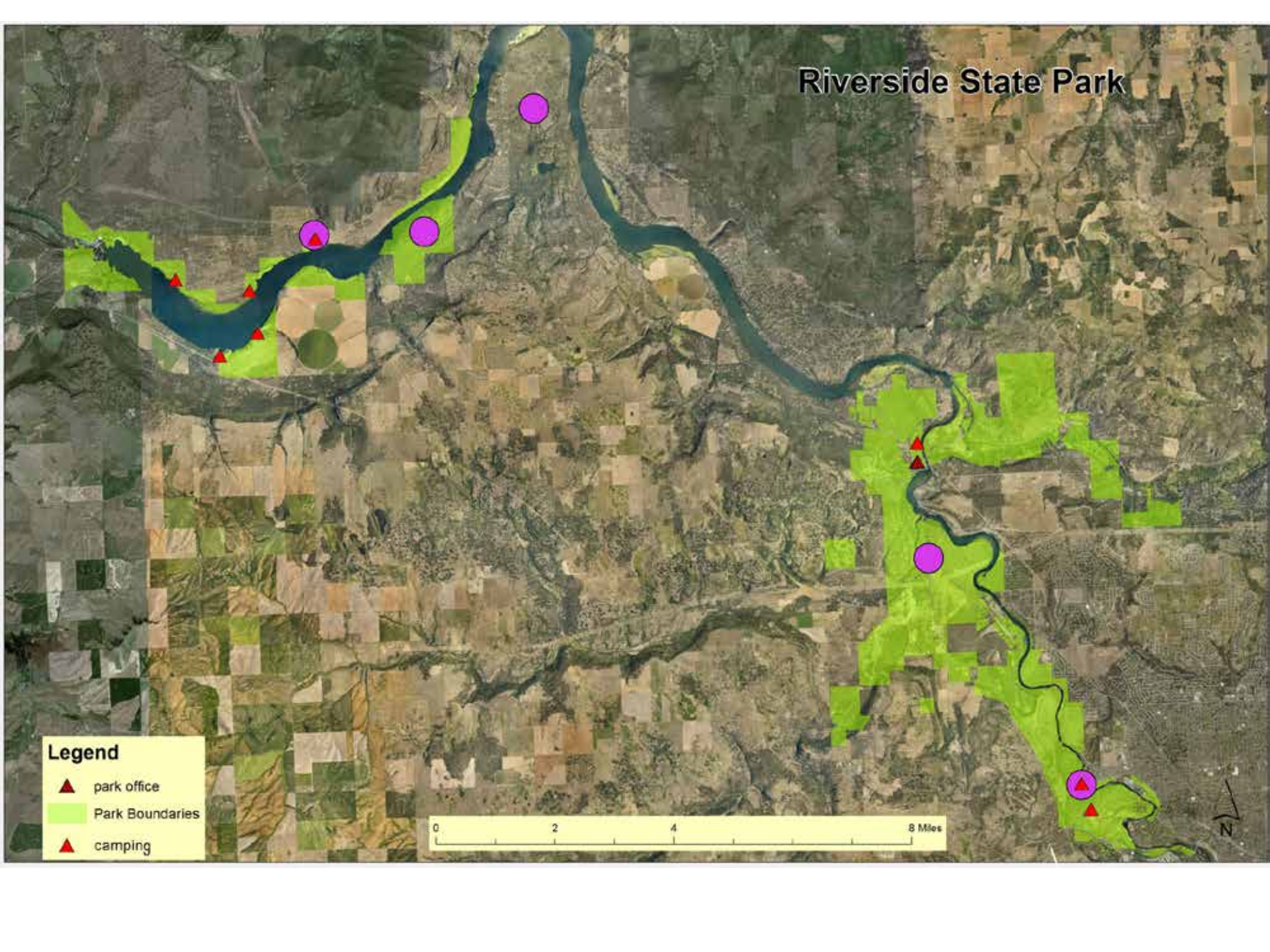
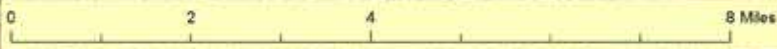
Camping/Swimming Opportunities

- DNR (Knight's Lake) property 621-acres
- DNR (Lake Spokane Campground) additional development
- ORV Area
- Fisk property (Swimming)
- (Improve swimming opportunities at Nine Mile Campground)
- *According to Spokane County Parks and Rec. there is a dearth of camping options in the region*

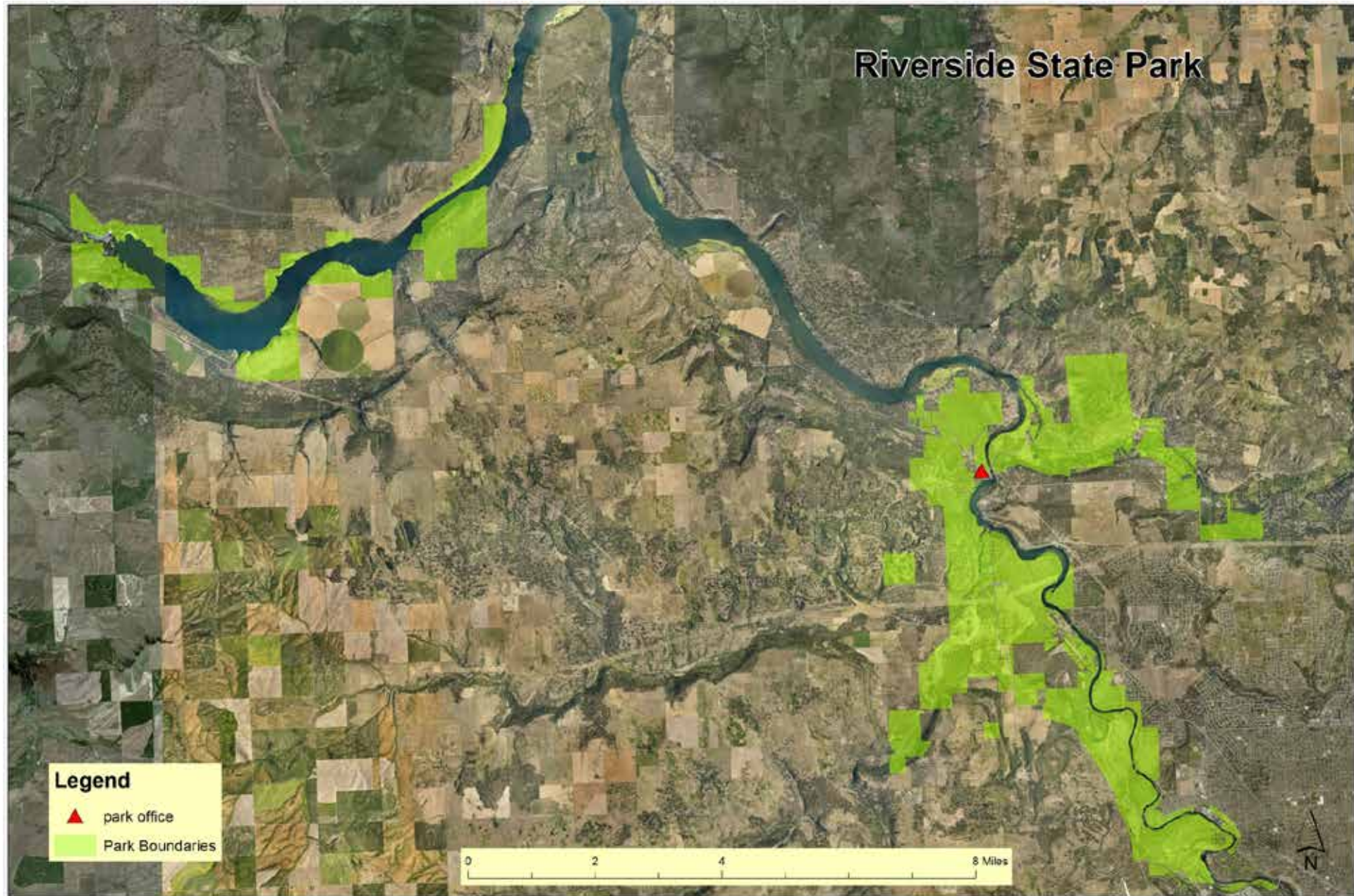
Riverside State Park

Legend

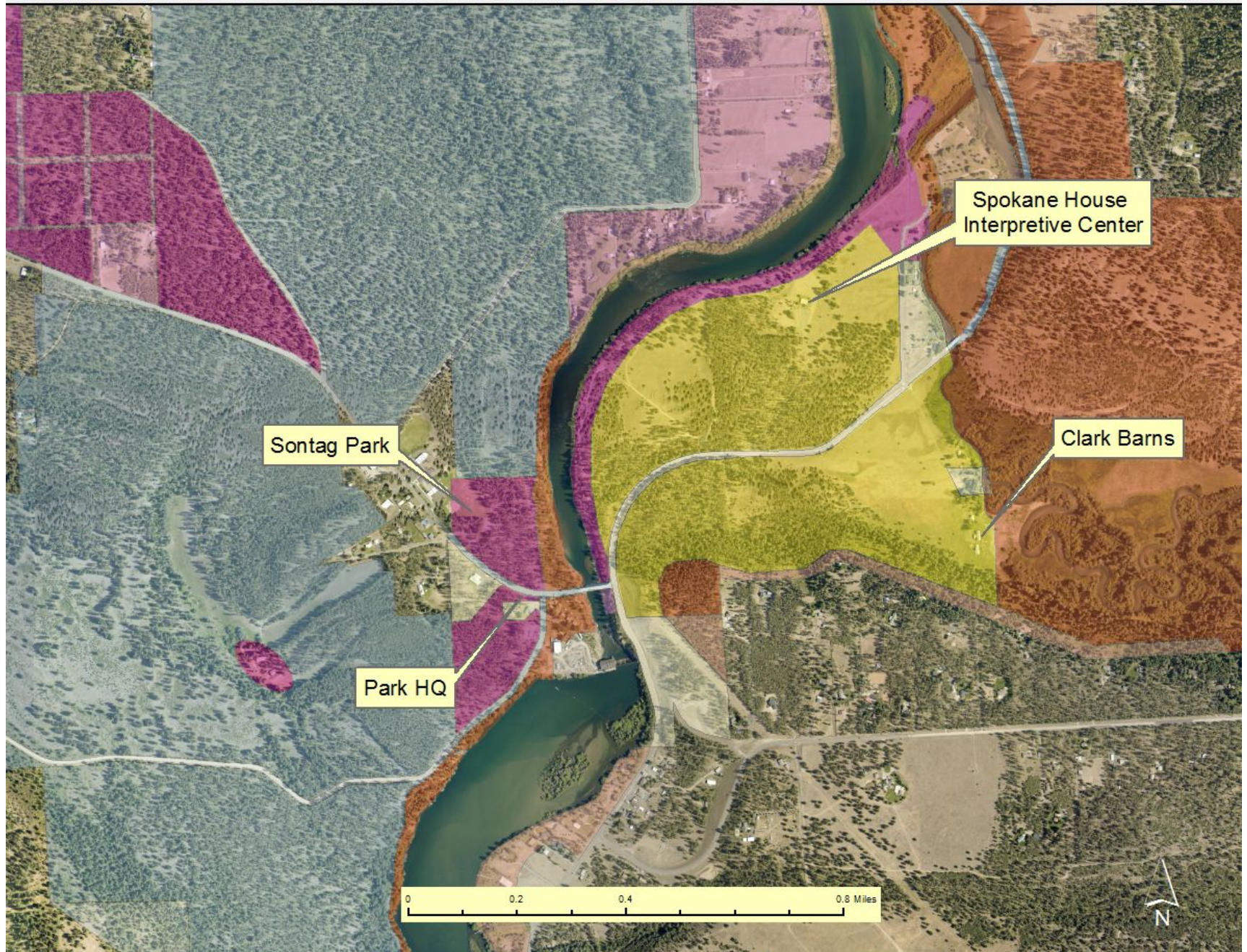
-  park office
-  Park Boundaries
-  camping

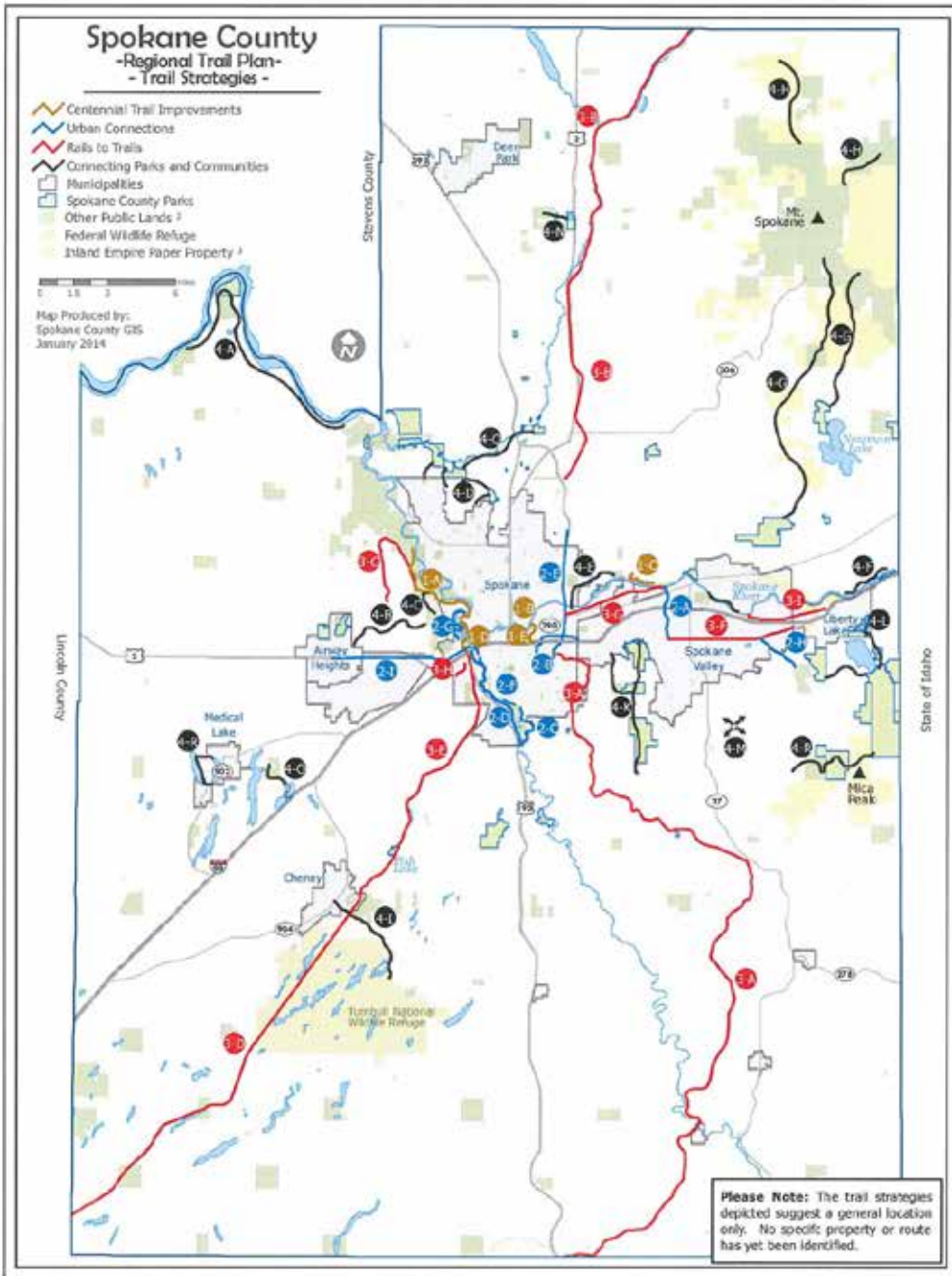


New Central Location for Administration is Needed for Park

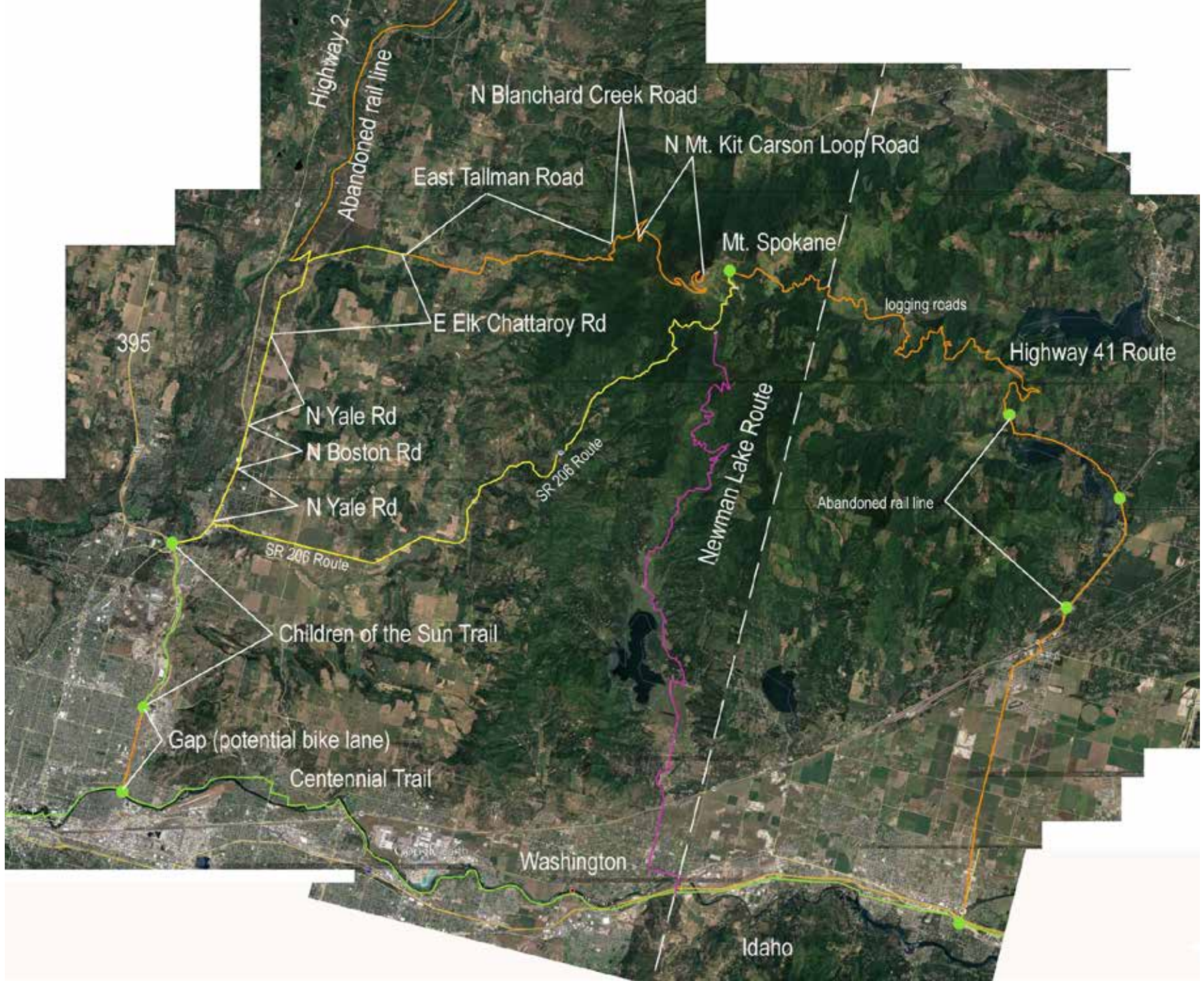


New Central Location for Administration





Trail Connection between Riverside and Mount Spokane



Other Issues:

Fishing

- ADA pier at Nine Mile Falls
- ADA pier at Fisk property

Non-motorized boat launch

- Nine Mile Falls
- Fisk

Motorized boat launch

- Improve existing launch at Nine Mile Falls
- Develop boat launch at Fisk

Fire Management

Riverside State Park Forest Health Plan and Fuel and Fire Risk

The **strategy** is to consider the best **treatments** for the **buffers** and park Interior:

- Reduce crown fire potential
- Improve habitat for the flora and fauna native to this area
- Increase the height and diameter of residual trees
- Provide aesthetically pleasing landscapes for visitors

Riverside CAMP

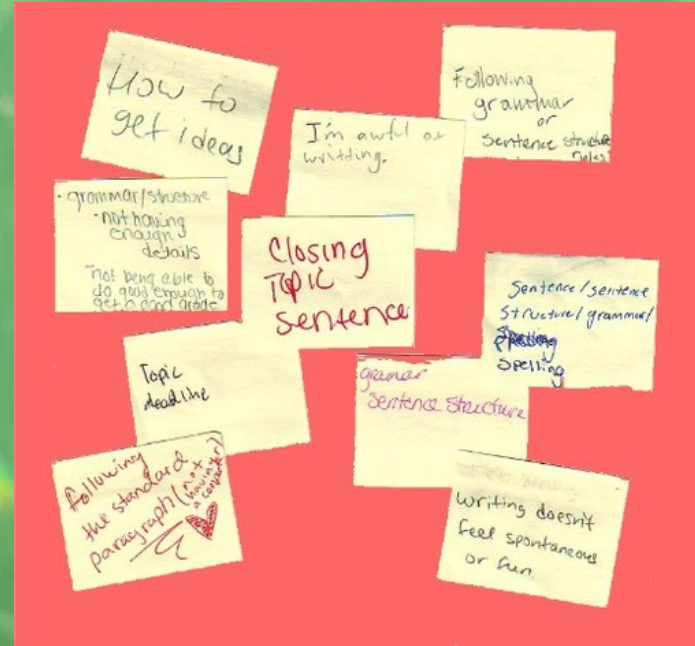
Next Steps

- Preliminary Staff Recommendations—
March/April
- Staff Report to Commission—May meeting in
Spokane (Hotel RL Spokane at the Park)
- Commission Consideration for Adoption—July
in Vancouver City Hall

YOUR COMMENTS



Step 1



Step 2



Give us your comments

Michael Hankinson

Washington State Parks and Recreation Commission

1111 Israel Road SW

Olympia, WA 98514

Phone: (360) 902-8671

E-mail: Michael.Hankinson@parks.wa.gov

Website: bit.ly/RiversideSP-plan

