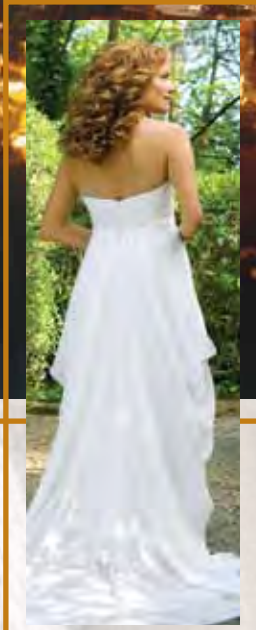


# The perfect place for a wedding — to make your dreams come true!

## Log Hall at Kitsap Memorial



Imagine your wedding at Kitsap Memorial State Park, overlooking beautiful Hood Canal with scenic views of the

snow-capped Olympic Mountains. Nestled among Douglas-firs, a cluster of historic buildings includes a lovely log hall, a large kitchen shelter, a charming cabin and outdoor pavilion. Kitsap Memorial State Park offers all the amenities you will need at an affordable price for one of the biggest events in your life.

The rustic main Log Hall, Caterer's Kitchen and Hospitality House were built in the 1930s by the Works Progress Administration. The Pavilion, in keeping with the log design of the other structures, was added in 2001. The facilities are available for rent year round. You may decorate your wedding with spring or summer flowers, dramatic fall colors or winter holiday trim. The children will enjoy playing outdoors on a large, open grassy field or playground equipment that are adjacent to the facilities.

Kitsap Memorial State Park is on the east shore of Hood Canal and south of the Hood Canal Bridge — approximately 45 miles from Tacoma and 80 miles from Seattle by highway (20 miles by ferry from Seattle).



**Directions to the park:** From Tacoma: Take the Highway 16 exit off of I-5 north across the Narrows Bridge to Gorst. Drive around Dye's Inlet toward Bremerton onto Highway 3 to Hood Canal Bridge. Drive past the Silverdale and Poulsbo exits, and continue north for 5 miles. Follow the park sign .75 mile, turn left onto Park Street (milepost 57) and follow road to the park entrance.



**Kitsap Memorial State Park**  
202 N.E. Park Street  
Poulsbo, WA 98370  
(360) 779-3205

[kitsap.memorial@parks.wa.gov](mailto:kitsap.memorial@parks.wa.gov)  
[www.parks.wa.gov](http://www.parks.wa.gov)

### Washington State Parks and Recreation Commission

P.O. Box 42650  
Olympia, WA 98504-2650  
(360) 902-8500  
[www.parks.wa.gov](http://www.parks.wa.gov)



#### Commission members:

Fred Olson	Joan Thomas
Rodger Schmitt	Cecilia Vogt
Eliot Scull	Lucinda S. Whaley
Joe Taller	

**Agency director: Rex Derr**

*All Washington state parks are developed and maintained for the enjoyment of all people.*

To request this brochure in an alternative format, please call (360) 902-8844 or the Washington Telecommunications Relay Service at (800) 833-6388. P&R 45-85000-03 (01/10)

# Celebrate your Wedding at Kitsap Memorial State Park



# Unique facilities that make your special day even more memorable!

## Log Hall at Kitsap Memorial



This lovely, old-fashioned building has an expansive, cozy wood interior and an open log cathedral ceiling. With more than 3,000 square feet of solid wood floor space, there is ample room for a wedding celebration of up to 200 guests, as well as for the wedding couple and guests to dance the night away. The hall has a large double door that opens to a spectacular view. Tables, chairs, canopy and ice tubs are available for an additional fee. The hall and interior restrooms are ADA accessible.

## Caterer's Kitchen at Kitsap Memorial



The spacious kitchen shelter, located in close proximity to the hall and other buildings, offers plenty of flexibility for serving food or refreshments. Cook or heat prepared entrees on a wood-fed brick grill with iron plate cooktops or upright barbecue grills. There is no refrigeration available at the park.

## Hospitality House at Kitsap Memorial



This enchanting cabin is available for wedding day preparations and/or honeymoon or guest overnight rental. Situated in a quiet wooded setting, the cabin is furnished with log-style, knotty pine furniture. The cabin has a comfortable living room, kitchenette and a bedroom with a queen-size bed for two.

## Log Pavilion at Kitsap Memorial



Wonderful for outdoor ceremonies, this open structure is situated near the Log Hall and seats 125 people. Guests face a panoramic view as the bride and groom exchange their wedding vows.



Contact the experienced staff at Kitsap Memorial State Park for your wedding plans or for more information:  
**(360) 779-3205**

E-mail:  
[kitsap.memorial@parks.wa.gov](mailto:kitsap.memorial@parks.wa.gov)  
Web:  
[www.parks.wa.gov](http://www.parks.wa.gov)