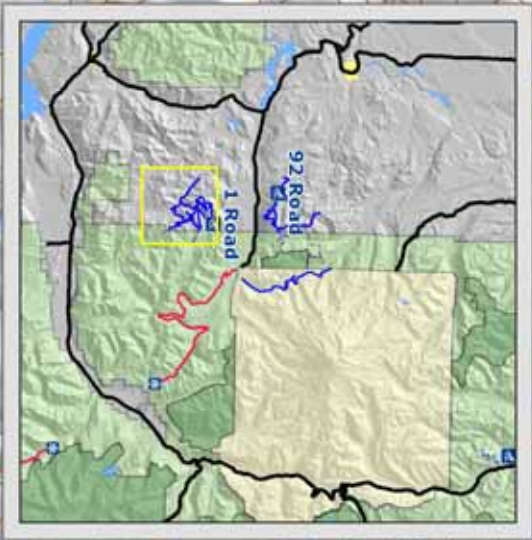
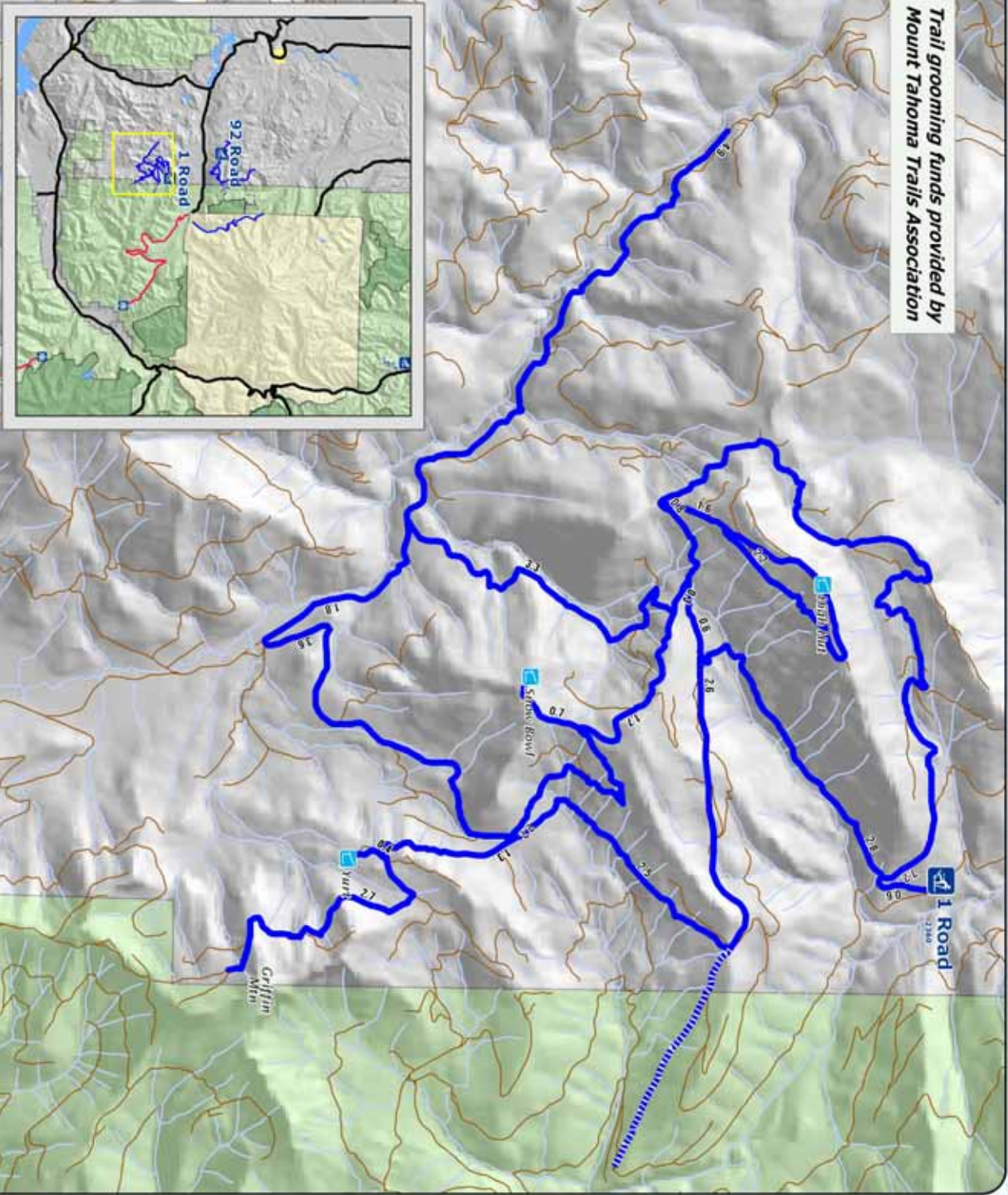
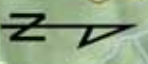


Trail grooming funds provided by  
Mount Tahoma Trails Association



**PLEASE REMEMBER:**  
No dogs or snowshoes on groomed ski track.  
Do not walk on the groomed trail.  
Downhill skiers have the right of way.  
Trails may become more difficult during icy conditions.



Welcome  
Road 1  
Sno-Park

# Groomed Trail System

## Explanation

- Non-Motorized Sno-Park
- Restroom
- Shelter
- Groomed Ski Trail
- Marked Ski Route
- Roads
- U. S. Forest Service

Mt Tahoma Trails System has 44 kilometers (27 miles) of groomed cross country ski trails.

Kilometers

Snow grooming equipment may be on the trail at any time.

Trail grooming schedules may change without notice due to snow conditions, temperatures, equipment breakdowns, etc.

Be aware of potential avalanche danger, check [www.nwac.us](http://www.nwac.us) before you leave home.

Trail grooming schedules and maps at [www.parks.wa.gov/winter](http://www.parks.wa.gov/winter)

Please report errors or comments to: [winter@parks.wa.gov](mailto:winter@parks.wa.gov)

For Emergency Call 911  
Yakima Co. Sheriff 509-574-2500