

Park amenities and facilities

Conconully State Park offers several amenities and facilities to make your visit more enjoyable and comfortable, including:

- Two day-use shelters with electricity. One shelter accommodates up to 25 guests, the other up to 50 guests. Both shelters are reservable. Surrounding area can accommodate additional guests.
- 90 picnic tables.
- Horseshoe pits.
- Modern restrooms with hot showers.
- Two watercraft launches and 80 feet of dock. Watercraft launches may not be accessible at all times in the spring, summer and fall due to lake water levels. Call the park to get lake level information (509) 826-7408.

The Discover Pass is required for day visits to state parks and access to other state-managed recreation lands. The pass provides access to millions of acres of parks, wildlife areas, trails, natural areas and water-access sites. The annual pass is transferable between two vehicles.

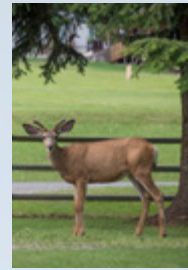
- Annual pass: \$30 • One-day pass: \$10 (transaction and dealer fees may apply)

The Discover Pass can be purchased online, by phone or in person. For details, visit www.discoverpass.wa.gov or call (866) 320-9933.

Thank you for supporting Washington state recreation lands.

Things to remember

- **Park hours** – 6:30 a.m. to dusk.
- **Winter schedule** – 8:00 a.m. to dusk. Although most parks are open year round, some parks or portions of parks are closed during the winter. For a winter schedule and information about seasonal closures, visit www.parks.state.wa.us or call the information center at (360) 902-8844.
- Wildlife, plants and all park buildings, signs, tables and other structures are protected; removal or damage of any kind is prohibited.
- Hunting, feeding of wildlife and gathering firewood on state park property is prohibited.
- Only one vehicle per site can have sleeping accommodations. There is a maximum of eight people per campsite.
- Campsites may not be held for other parties.
- Check-in time is 2:30 p.m. for campsites, and 2:30 p.m. for cabins.
- Check-out time is 11 a.m. for cabins, and 1 p.m. for campsites.
- Extra vehicle overnight - \$10 per night in designated area for each vehicle in excess of the one allowed per site. Does not apply to vehicle towed by a recreational vehicle.
- Pets must be on leash and under physical control at all times. This includes trail areas and campsites. Pet owners must clean up after pets on all state park lands.
- Engine-driven electric generators may be operated only between the hours of 8 a.m. and 9 p.m.



Conconully State Park
119 West Broadway
Conconully, WA 98819
(509) 826-7408

State Parks information:
(360) 902-8844

Reservations: Online at www.parks.state.wa.us or call (888) CAMPOUT or (888) 226-7688

Other state parks located in the general area:
Pearrygin Lake, Alta Lake, Bridgeport and Curlew lake

Connect with us on social media

twitter www.twitter.com/WASStatePks

facebook www.facebook.com/WashingtonStateParks

YouTube www.youtube.com/WashingtonStateParks

Share your stories and photos: AdventureAwaits.com



If you would like to support Washington State Parks even more, please consider making a donation when renewing your license plate tabs. You also may place a check in a donation box when you visit state parks. Donations are a significant part of the State Parks budget and are needed to keep your parks open and operating. For more information, visit www.parks.state.wa.us/donations

Washington State Parks and Recreation Commission

P.O. Box 42650
Olympia, WA 98504-2650
(360) 902-8500
www.parks.wa.gov



Commission members:

Ken Bounds Mark O. Brown
Patricia T. Lantz Steve S. Milner
Douglas Peters Rodger Schmitt
Lucinda S. Whaley
Agency director: Don Hoch

All Washington state parks are developed and maintained for the enjoyment of all people.

To request this brochure in an alternative format, please call (360) 902-8844 or the Washington Telecommunications Relay Service at (800) 833-6388. P&R 45-41000-01 (05/17)



EMBRACE YOUR NATURE

www.parks.state.wa.us



Washington State Parks

CONCONULLY State Park



Overnight accommodations

For overnight stays, the park offers 20 partial-utility campsites, and 40 standard campsites. All are reservable except for six standard sites in the south campground which are first come, first served.

Looking for the comforts of home while enjoying the beautiful outdoors? The park also offers five cabins located at the west end of the main park. Cabin 1 has two rooms and sleeps six; it is furnished with one double bed and two sets of stacked bunks. Pets are allowed only in cabin 1 with a \$15 fee per pet, per night. Cabins 2 through 5 sleep four guests and are furnished with one double bed (sleeps two) and one set of stacked bunks (sleeps two). Please bring your own bedding. Restrooms are nearby in the park. Each cabin has air conditioning, heating, electrical outlet and ceiling fan. Outside is a fire ring, with attached grill.

Campsites and cabins may be reserved online at www.parks.state.wa.us or by calling (888) CAMPOUT.

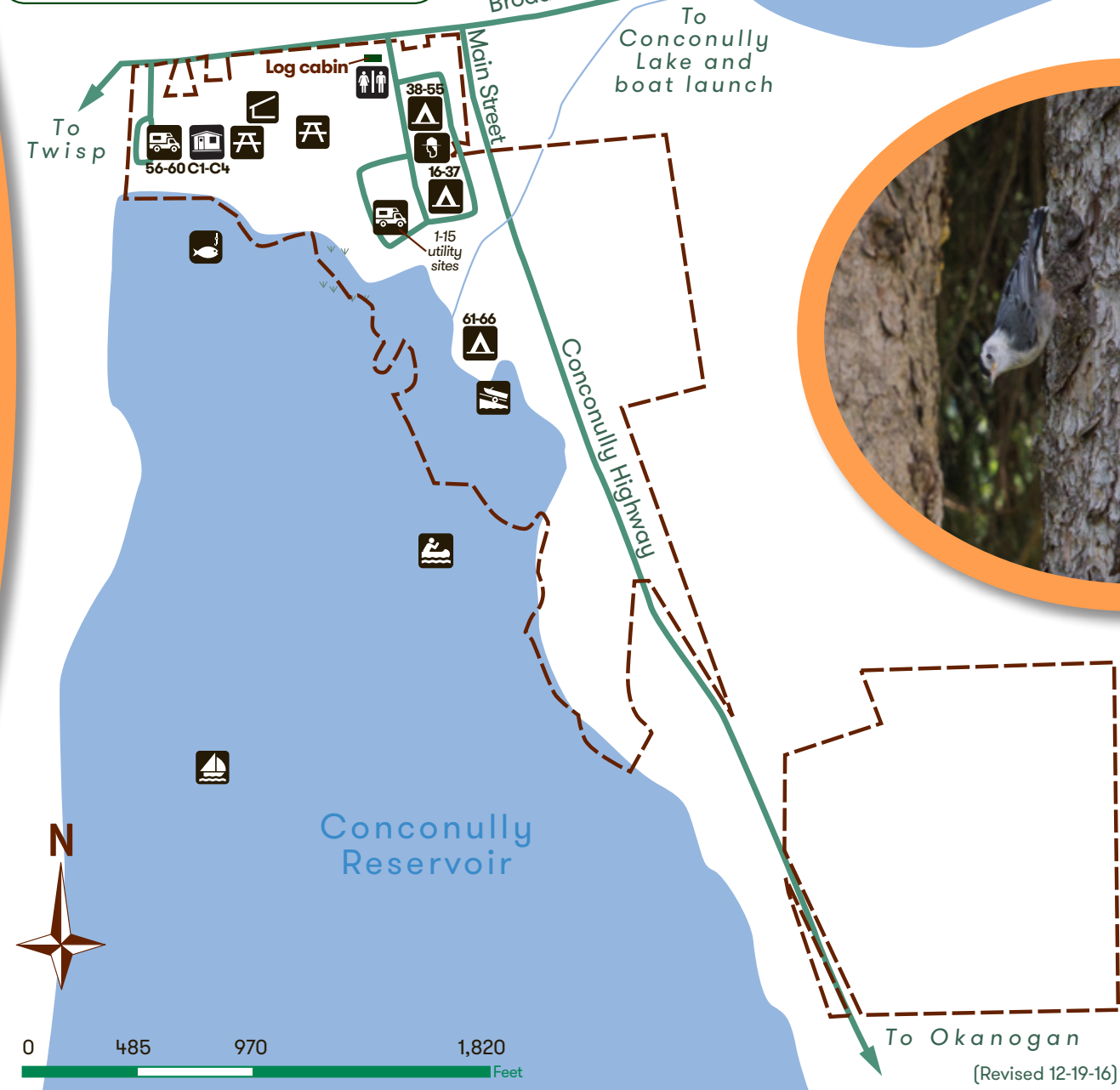
CONCONULLY STATE PARK

is a beautiful 81-acre camping park that is nestled between three mountains and two lakes in north central Washington. The park is above 2,000 feet elevation with a setting of beautiful forest, creeks, lakes and mountains.

Considered a fisherman's paradise, this park offers camping and boat launches on two lakes. The park also is popular to enjoy a variety of outdoor activities, including waterskiing, boating, swimming, bird watching and off-road vehicle riding in warmer months, and cross-country skiing, dog sledding, snow shoeing, snow playing and snowmobiling in the winter.



Canoe access	Sailing	Ranger station
Fishing	Picnic area	Boat launch
Camping	RV camping	Restroom
Park boundary	Day-use shelter	Cabin



(Revised 12-19-16)